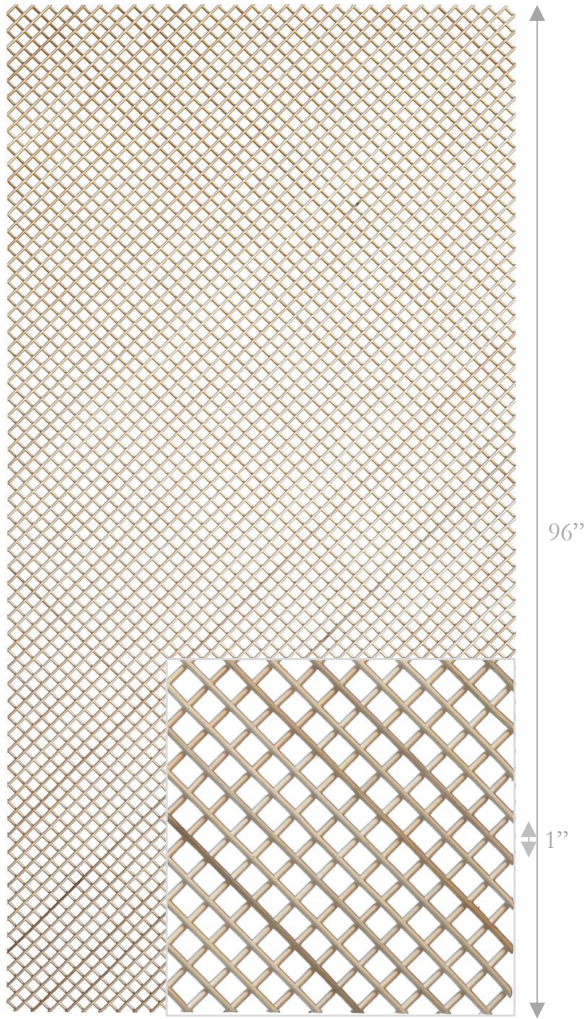


Rattan Collection

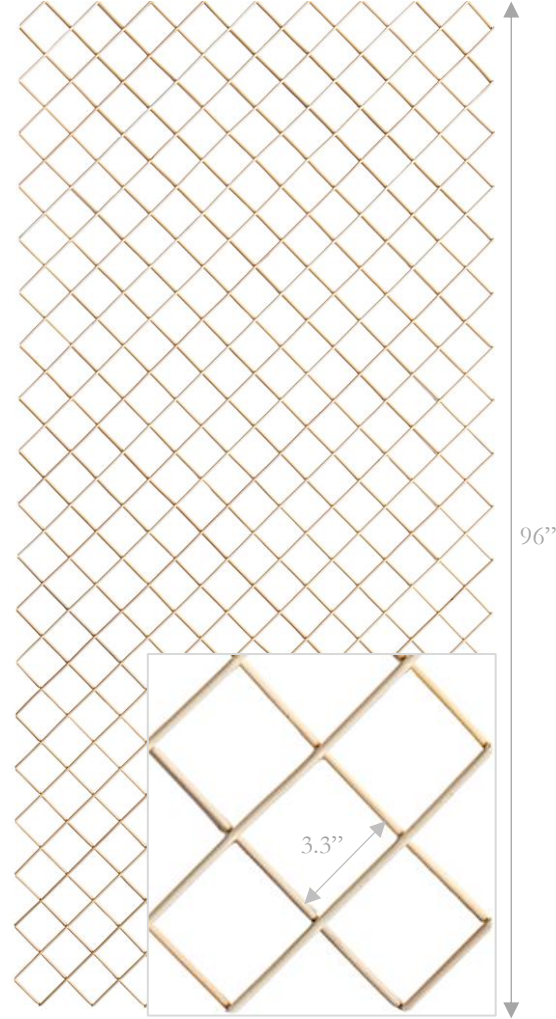
A COLLECTION FOCUSED ON EMOTION

Fuller Architectural Panels designs and produces hand crafted Rattan millwork. The unique rattan pieces are designed to embody the essence of timeless elegance. The distinguished Collection is comprised of panels, tiles, borders and corners.

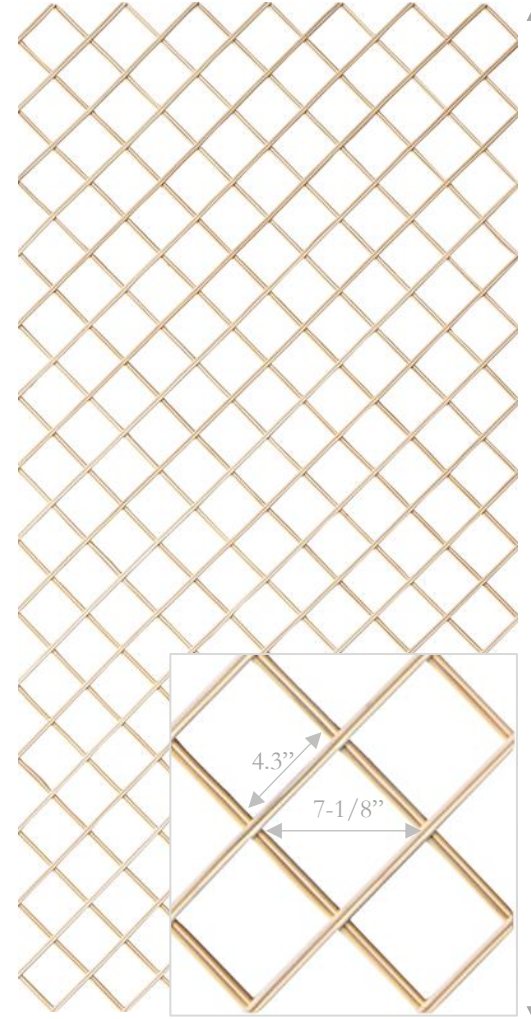




MICRO DIAMOND PATTERN
SKU: FP650
DOUBLE 1/4" SKIN OFF
SIZES: 122"X48"; 108"X48"; 96"X48"



DIAMOND PATTERN
SKU: FP651
SINGLE 1/4" SKIN OFF
SIZES: 122"X48"; 108"X48"; 96"X48"



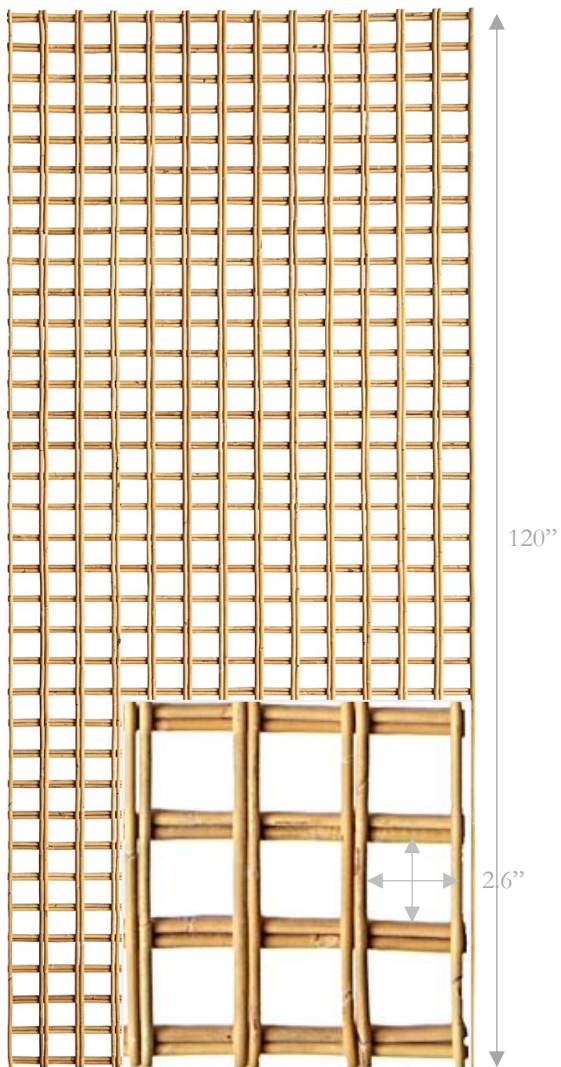
DIAMOND PATTERN
SKU: FP652
DOUBLE 1/4" SKIN OFF
SIZES: 122"X48; 108"X48"; 96"X48"



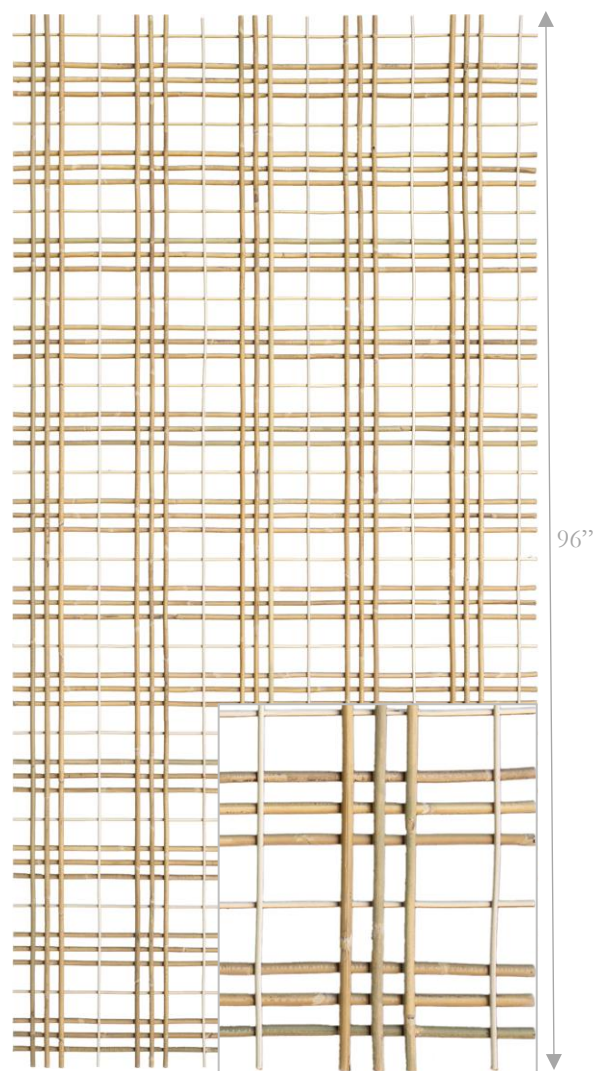
DIAMOND PATTERN
SKU: FP654
DOUBLE 1/2" SKIN ON
SIZES: 122.6"X48"; 108"X48"; 96"X48"

INHERENT WARMTH

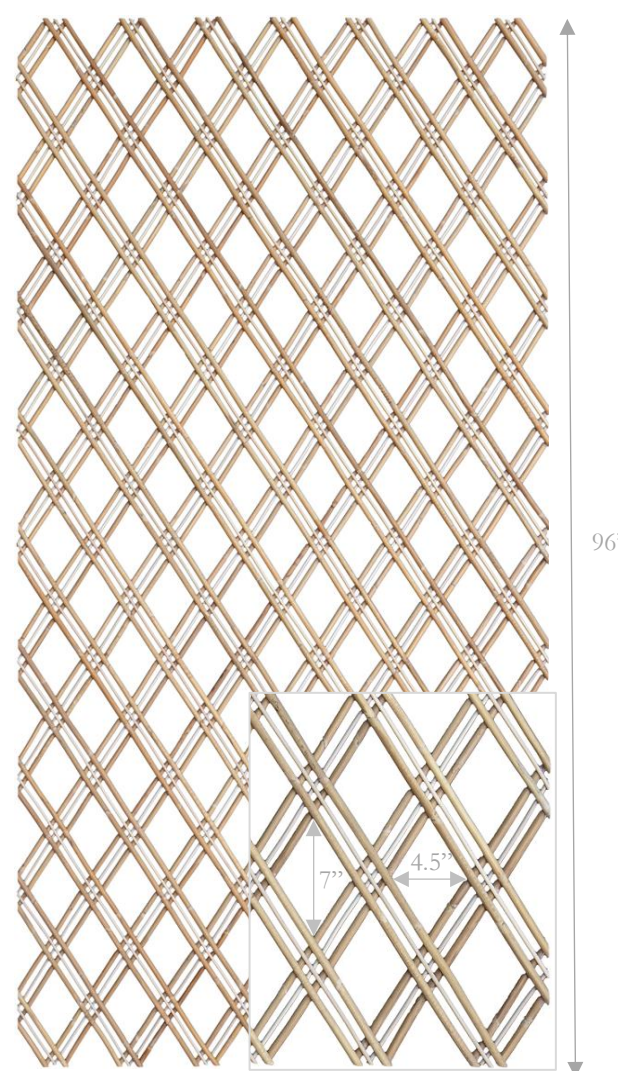
DIAMOND & SQUARE PANELS



SKU: FP673
SQUARE PATTERN
DOUBLE 1/2" SKIN ON
SIZES: 120"X45-1/2"; 108"X45-1/2"; 95-1/2"X45-1/2"



SKU: FP677
SQUARE PATTERN
TRIPLE 1/2" SKIN ON WITH 1/4" REED INSERT
SIZES: 120"X45-1/2"; 108"X45-1/2"; 96.4"X48"



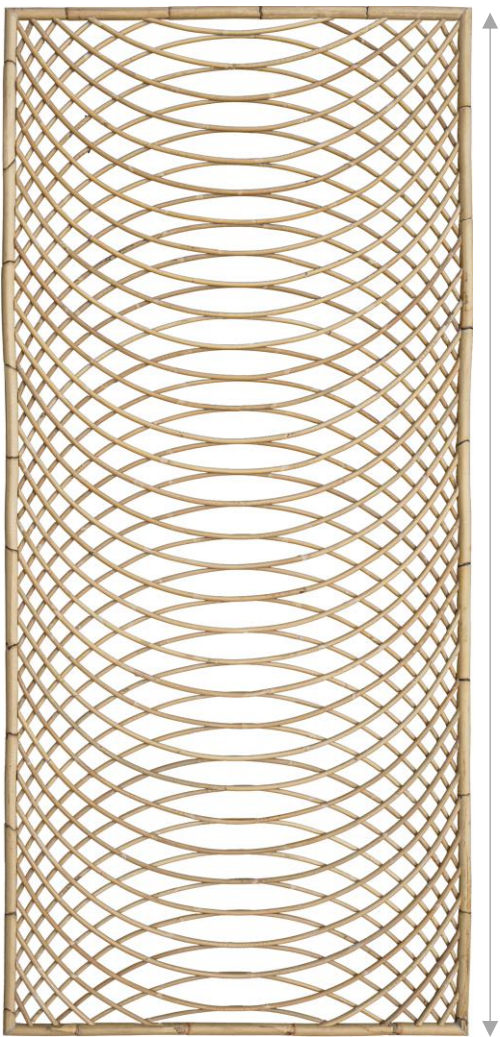
SKU: FP658
DIAMOND PATTERN
DOUBLE 1/2" SKIN ON WITH DOUBLE 1/4" REED INSERT
SIZES: 120"X45-1/2"; 108"X45-1/2"; 96.4"X48"



ATTENTION TO DETAIL



HAND CRAFTED FACEPLATE FRAMES



96-1/4"

41-1/4"

ARCH PATTERN

SKU: FP680

DOUBLE 1/2" SKIN ON; 1" SKIN ON FRAME

SIZES: 122"X48"; 108"X48"; 96"X48"; 96-1/4"X41-1/4"(SHOWN)



SKU: FP654 / FP604



SKU: FP651



LADDER PATTERN
SKU: FP601
1" FRAME
1/4" REED
84"x5-1/2"x1"



CIRCLE PATTERN
SKU: FP602
1" FRAME
1/4" REED
84"x5-1/2"x1"



ARCH PATTERN
SKU: FP603
1" FRAME
1/4" REED
84"x5-1/2"x1"



SM DIAMOND PATTERN
SKU: FP604
1" FRAME
1/4" REED
84"x5-1/2"x1"



LG DIAMOND PATTERN
SKU: FP610
1" FRAME
1/4" REED
84"x5-1/2"x1"

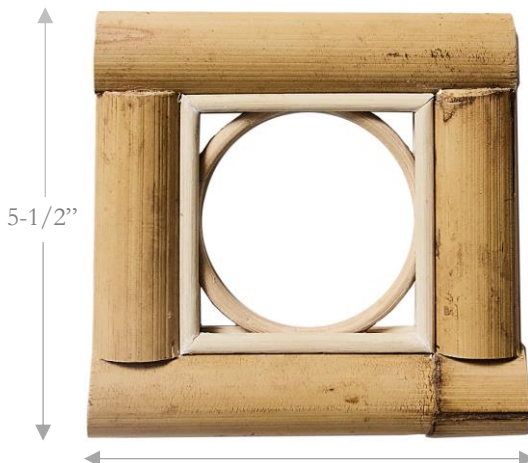
Our Approach

We provide rattan products left in their natural state and prepared for final finishing. By offering unfinished products, we empower clients to create one-of-a-kind pieces that are tailored to their specific color and sheen tastes. We do offer in house, matte or semi-gloss lacquer finishes if of interest.

Clients work with their preferred finisher to choose the stain or paint finish of choice which provides the freedom to either complement existing decor or create a unique and personalized finish. This flexibility is of high value to clients that value customization and individuality.



5-1/2"
DIAMOND CORNER
SKU: FP605
1" FRAME - 1/4" REED



5-1/2"
CIRCLE CORNER
SKU: FP606
1" FRAME - 1/4" REED

Factory Finish Options

- Clear Matte Lacquer or Polyurethane
- Clear Semi-Gloss Lacquer or Polyurethane

Raw Material Options

- 1/4"x108" poles without skin
- 1/2"x150" poles with skin
- 1"x150" poles with skin



SKU: FP604 / FP605



SKU: FP604 / FP606



Easy Luxury

Handcrafted Rattan Millwork

Rattan is a natural, fast growing vine material known for its strength and flexibility, making it an excellent choice for crafting various architectural elements such as furniture, accessories and now, an industry first, Millwork Collection inspired by our Treillage Collection. Our craftsmanship and attention to detail results in high-quality, design enhancing products

Collection of Panels, Tiles, Borders and Corners

The product line is divided into four main categories: Panels, Tiles, Borders and Corners. Each of the elements plays a distinct role in architectural design.

Artistic Value

Rattan millwork has inherent beauty and adds a natural and warm touch to interior or exterior spaces. Its use can contribute to the overall aesthetics and ambiance of a room, elevating the design to a higher level.

Versatility

Depending on the design and application, rattan millwork can be used in various architectural styles, from traditional to contemporary, bringing a touch of natural sophistication to any environment.

Sustainability

Rattan is a renewable resource, making it an eco-friendly choice for architectural applications. The use of sustainable materials aligns with environmentally conscious practices, which can be appealing to eco-minded clients. Fuller Architectural Panels handcrafted Rattan millwork offers a blend of artistry, customization, and sustainability, making it an attractive option for Architects, Designers, and Clients looking for distinctive architectural solutions.

Additional

- Rattan is a natural material therefore can expand and contract.
- Rattan material and product dimensions will vary.
- Do not install in direct contact with sunlight or water.
- Do not store in hot, dry heat, direct sunlight or contact with water.
- Standard dimensions subject to change without notice.
- Products are made to order therefore are not returnable.
- Pricing is USD and does not include packaging, shipping or applicable taxes.
- Terms and Conditions and Warranty info found on website or by request.