

# FULLER

ARCHITECTURAL PANELS

MILLWORK/JEWELRY

## Treillage Collection

Fuller Architectural Panels is a USA based firm that designs and manufactures standard & bespoke, classic & contemporary decorative treillage for interior and exterior applications. We are dedicated to providing high-quality, durable and visually appealing decorative treillage that enhance the overall look and feel of your space. Products are produced using high performance synthetic materials that are paint grade nor will not rot or rust. Our extensive experience allow us to work with world-renowned Architects, Interior Designers and Millwork Companies.



*Gracious Opulence*





SKU:FP753 / FP747 / FP748



FP765 / FP743



FP766 / FP767 / FP747 / CUSTOM ARCH



FP772 / FP745 / FP762



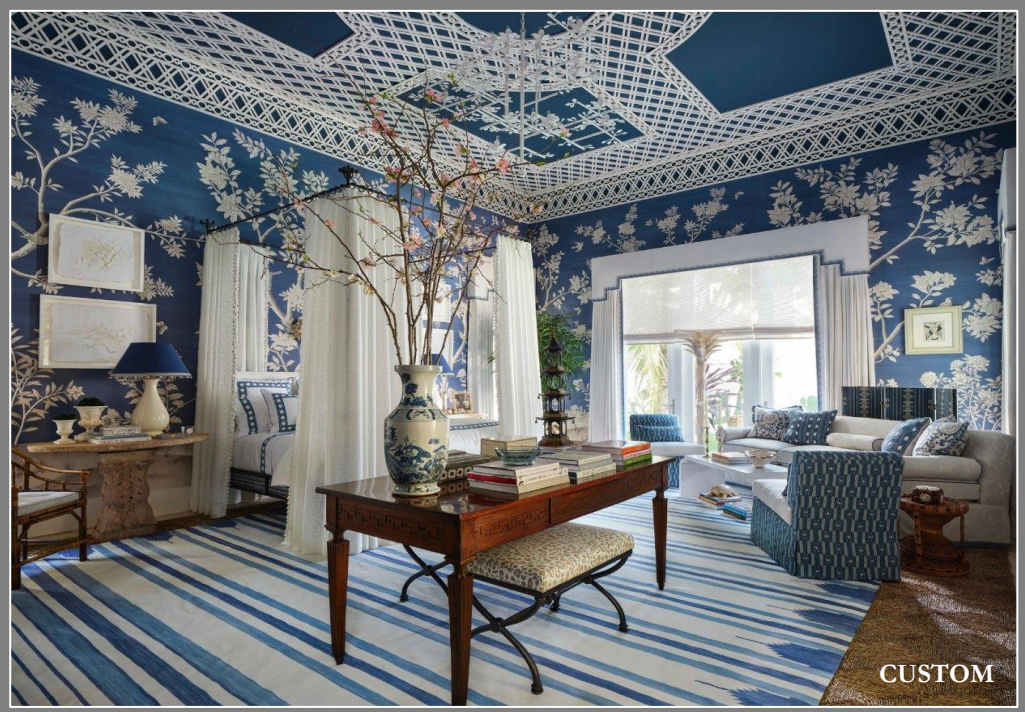
FP767 / FP747



FP184 / FP743

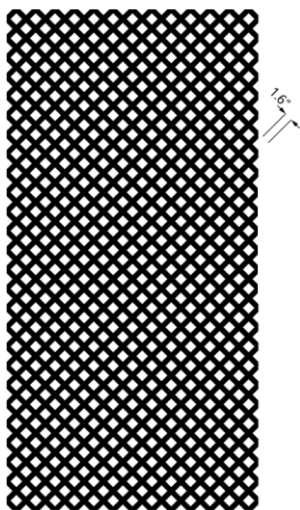


FP769

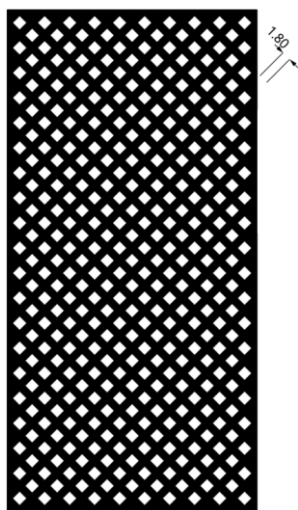


CUSTOM

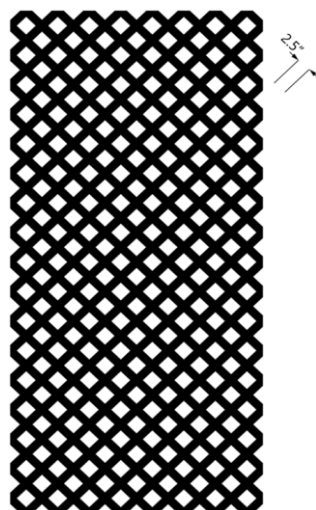
# Diamond Arrangement



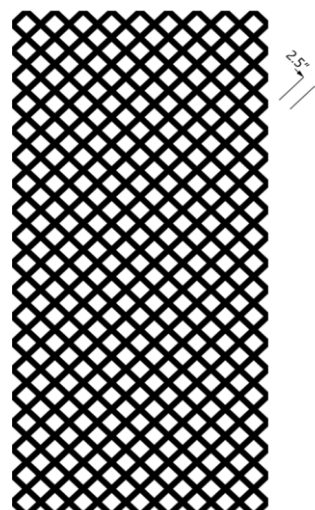
SKU: FP700-1



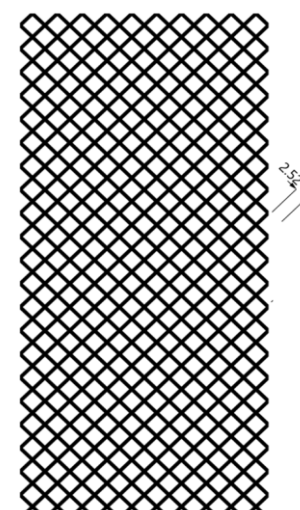
SKU: FP549-2



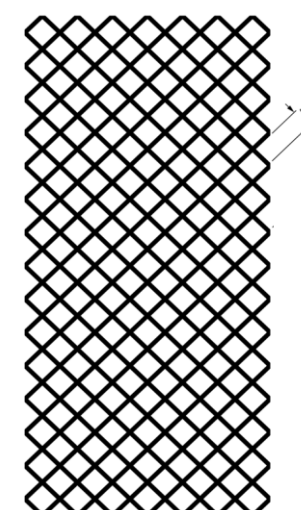
SKU: FP753-3



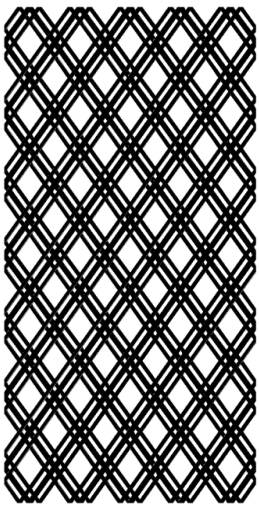
SKU: FP755-4



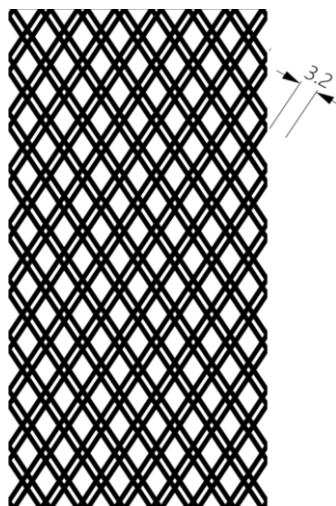
SKU: FP762-5



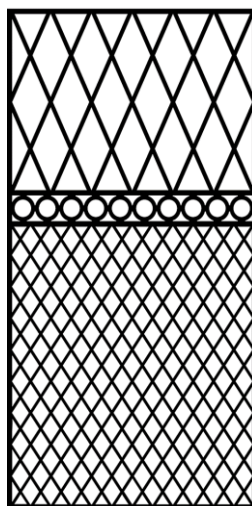
SKU: FP765-6



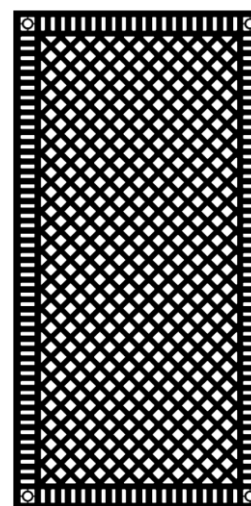
SKU: FP-916-7



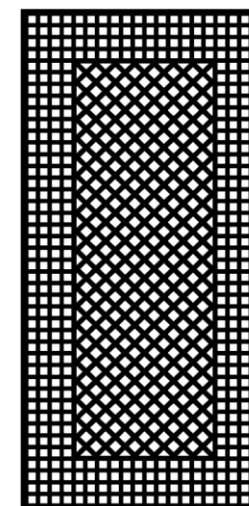
SKU: FP766-8



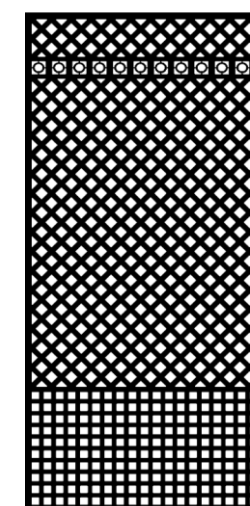
SKU: FP714 -9



SKU: FP704-10



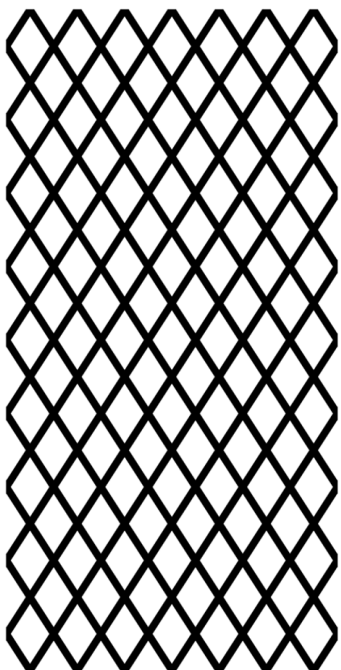
SKU: FP705-11



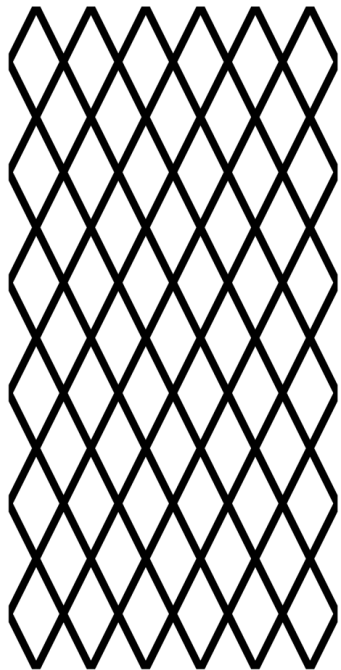
SKU: FP707-12

# Diamond Arrangement

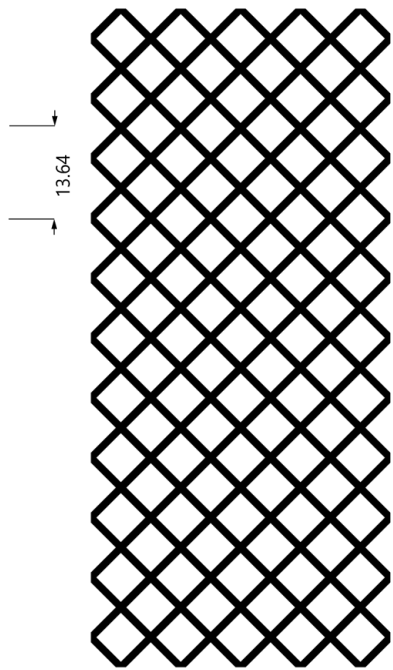
(recently added)



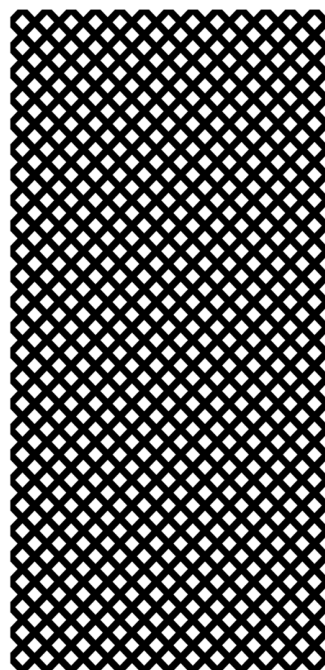
SKU: FP786-13



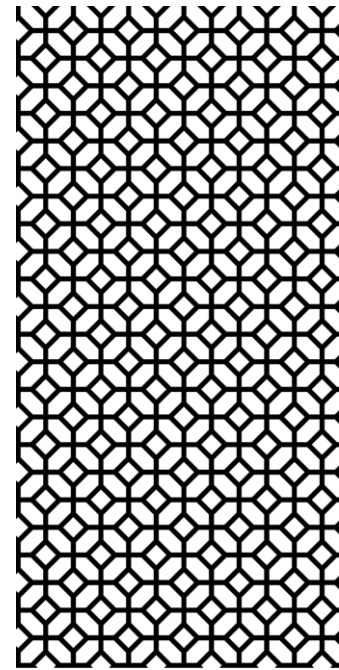
SKU: FP927-14



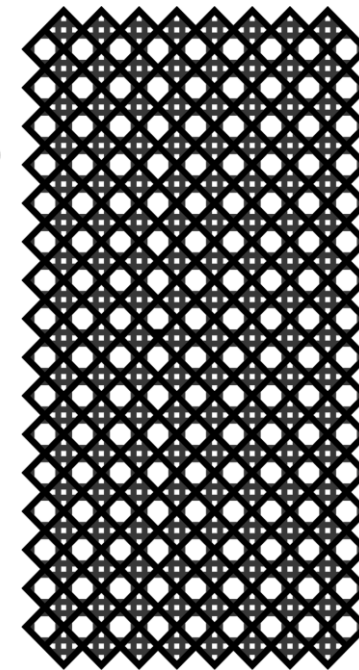
SKU: FP945-15



SKU: FP144-16



SKU: FP929-17



SKU: FP954-18

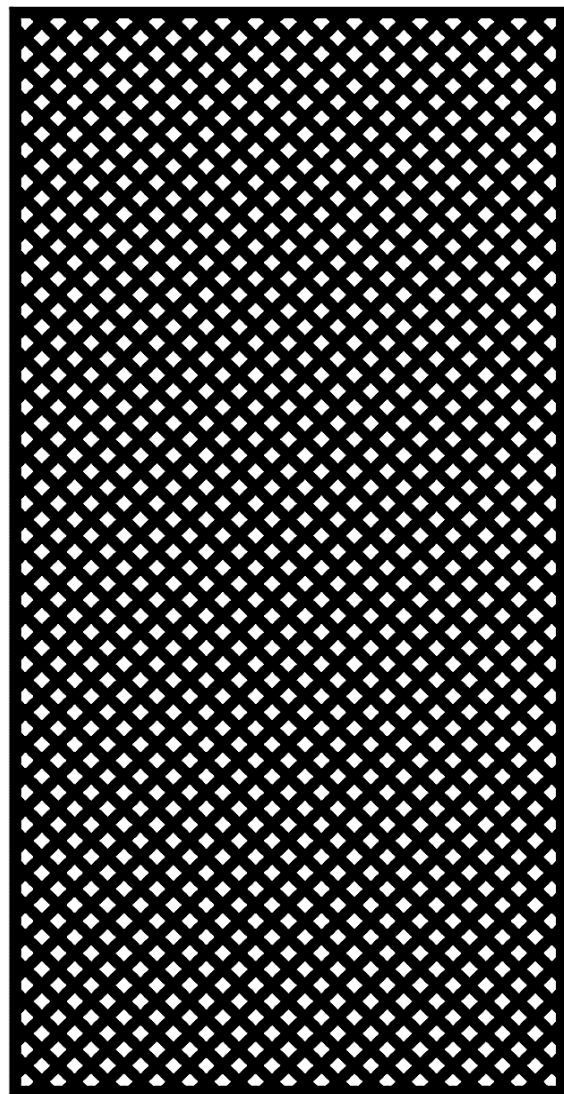
9.0

13.64

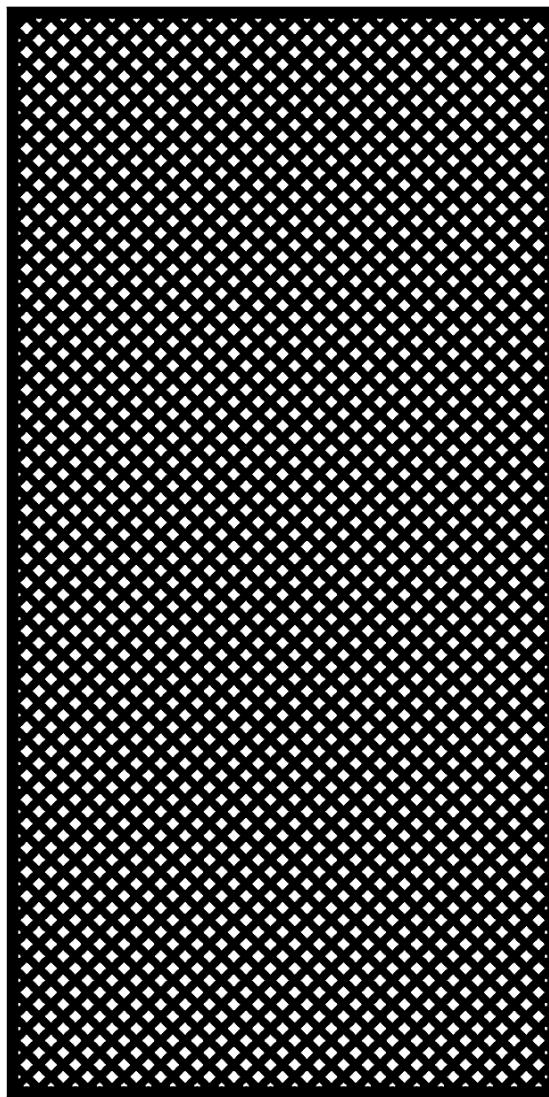
5.14

1.33

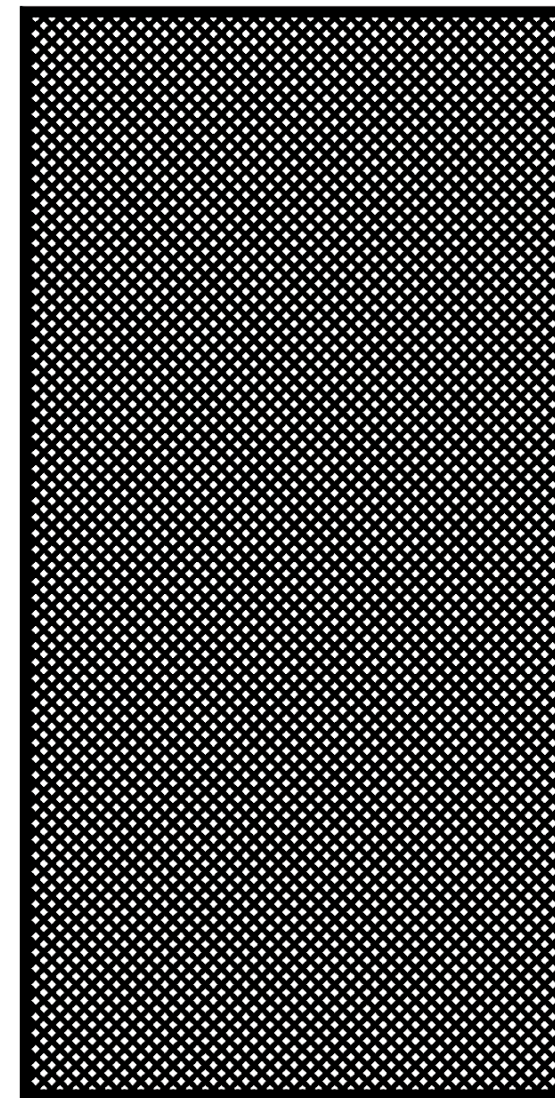
2.20



SKU: FP938-19

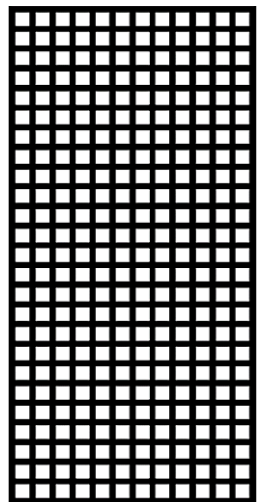


SKU: FP936-20

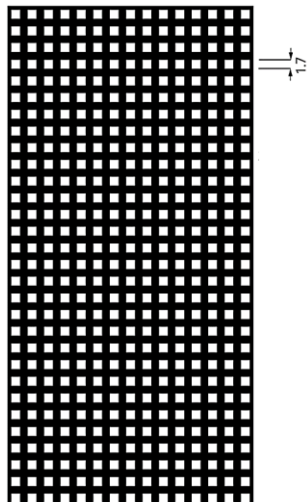


SKU: FP926-21

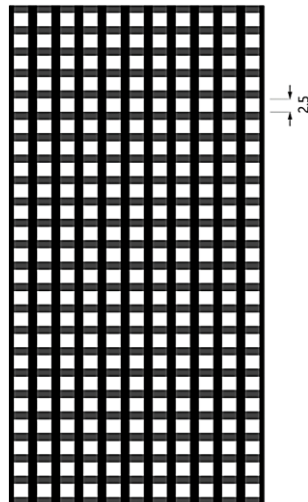
# Square Arrangement



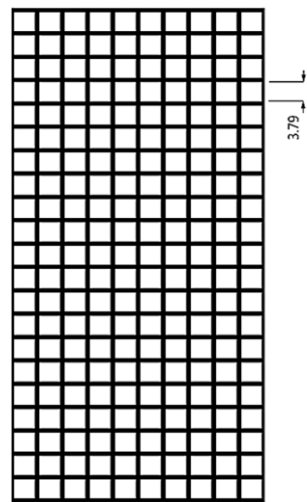
SKU: FP701-22



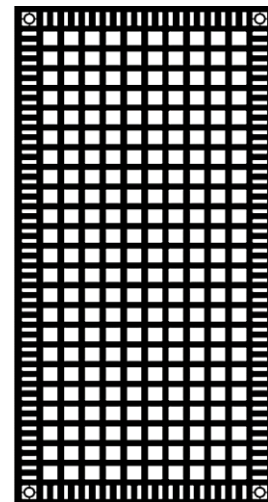
SKU: FP538-23



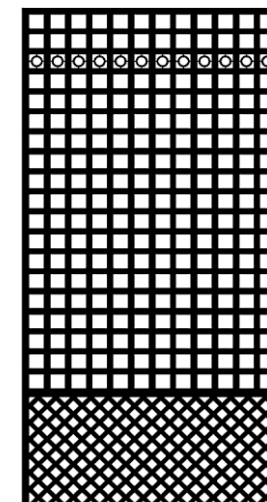
SKU: FP790-24



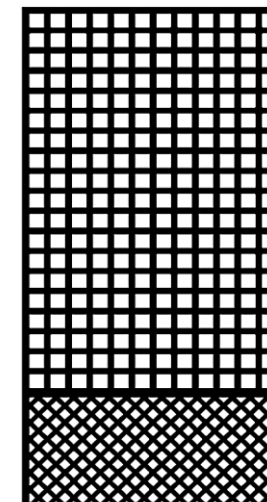
SKU: FP767-25



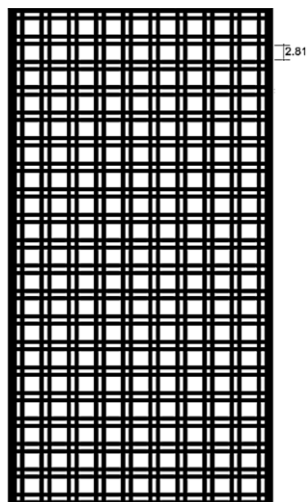
SKU: FP706-26



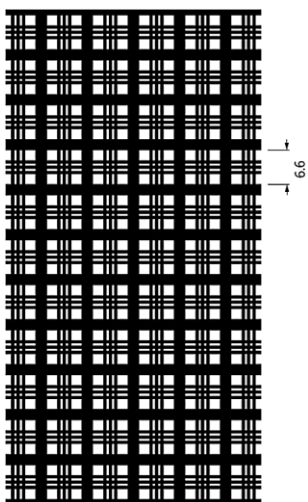
SKU: FP708-27



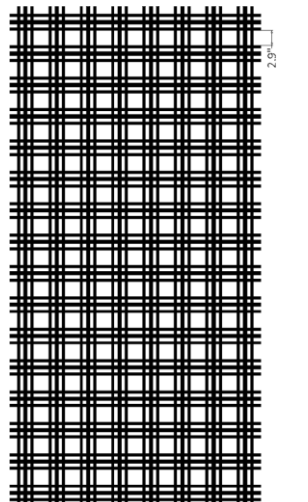
SKU: FP709-28



SKU: FP768-29



SKU: FP769-30



SKU: FP922-31



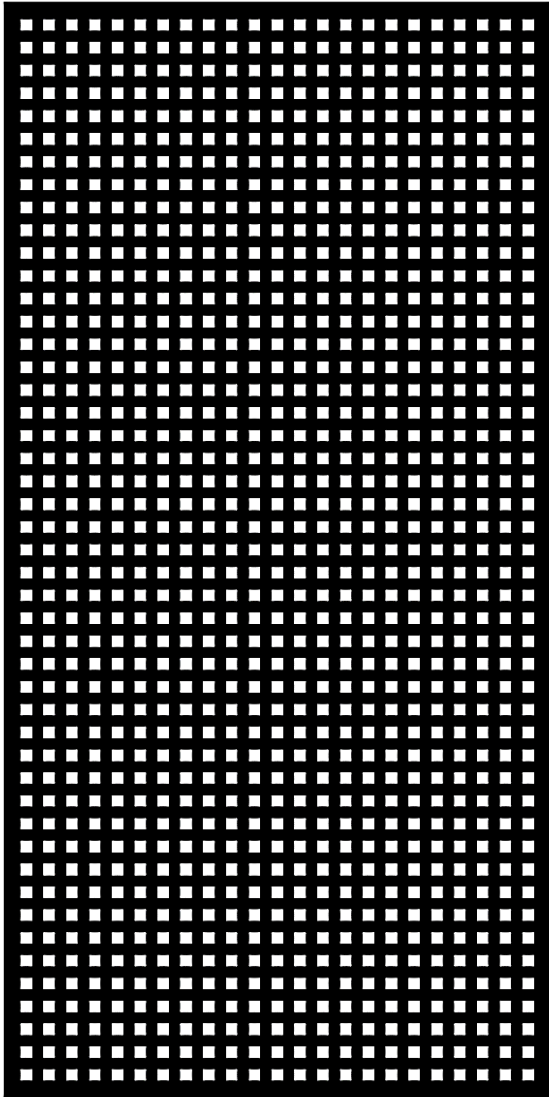
SKU: FP753 / FP746



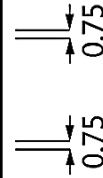
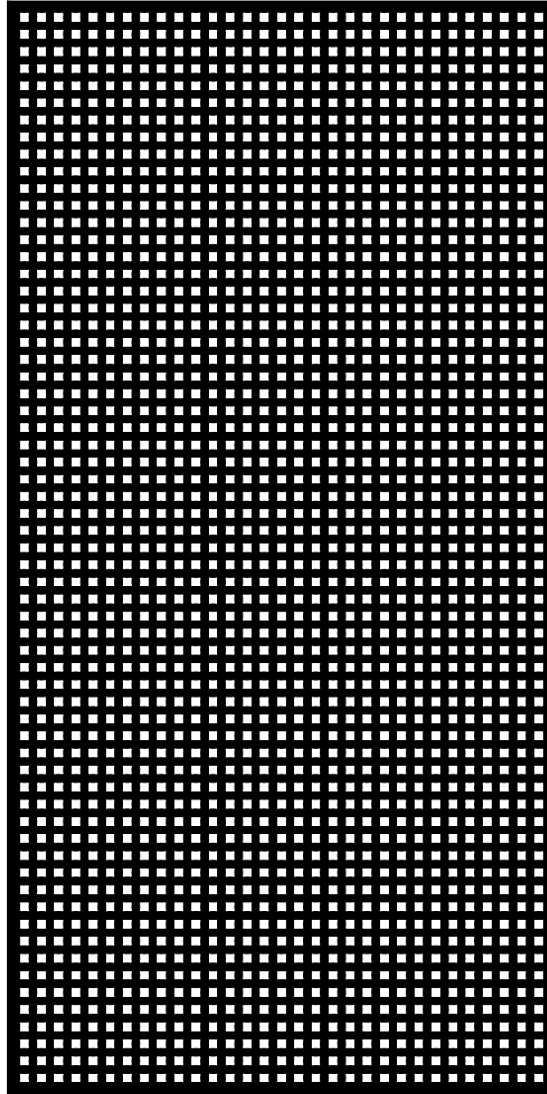
SKU: FP766-8



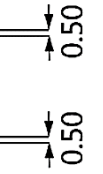
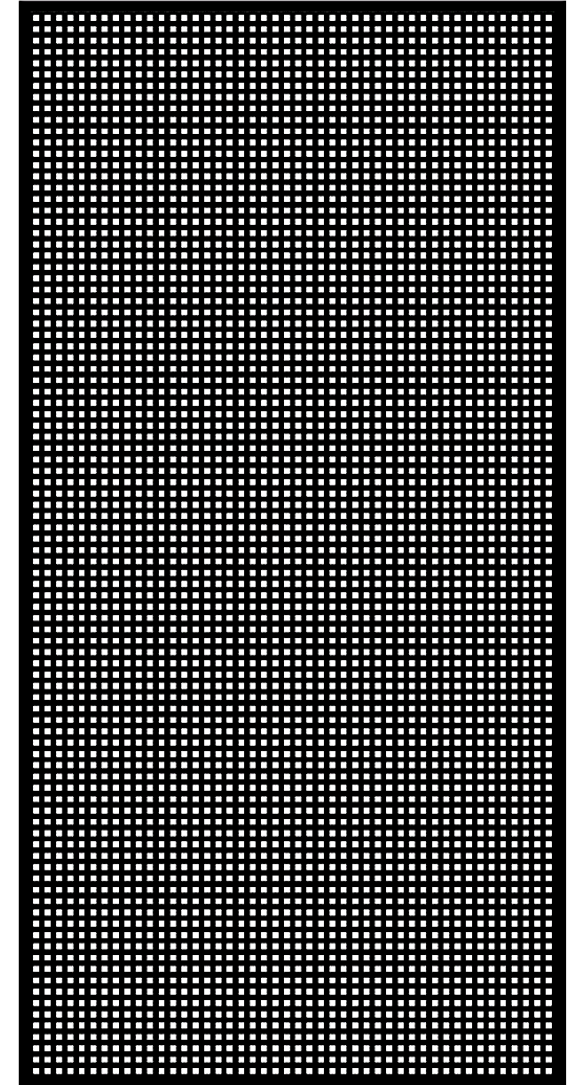
# Micro Square



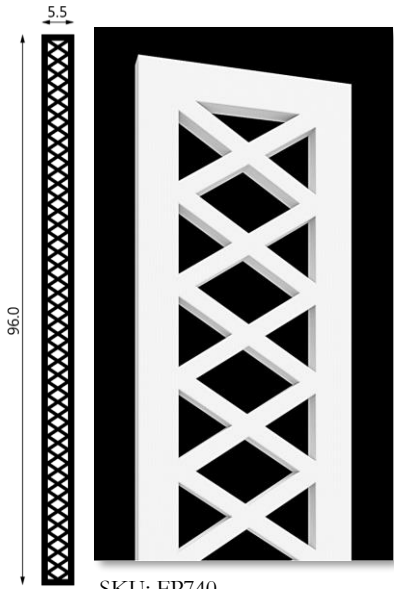
SKU: FP943-31



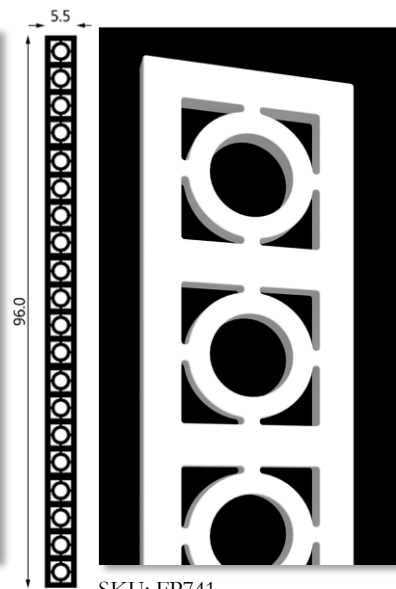
SKU: FP939-32



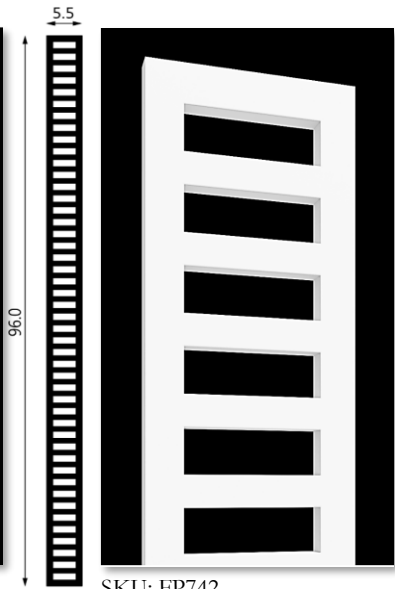
SKU: FP933-33



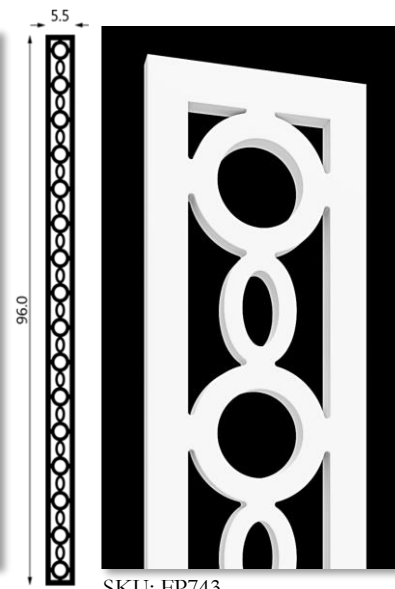
SKU: FP740



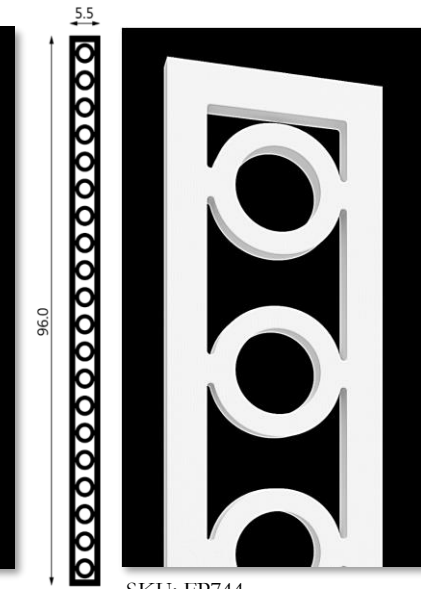
SKU: FP741



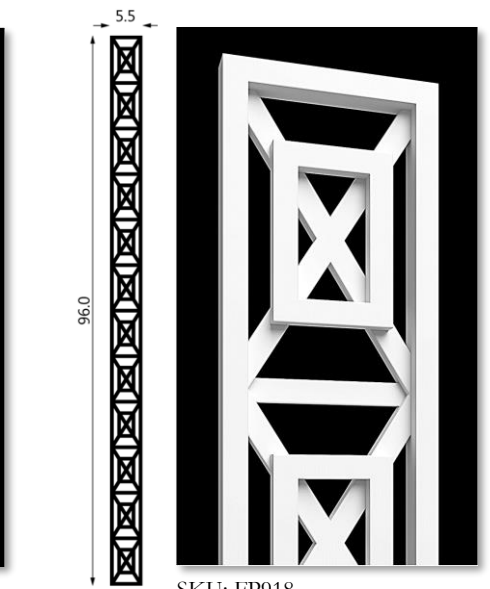
SKU: FP742



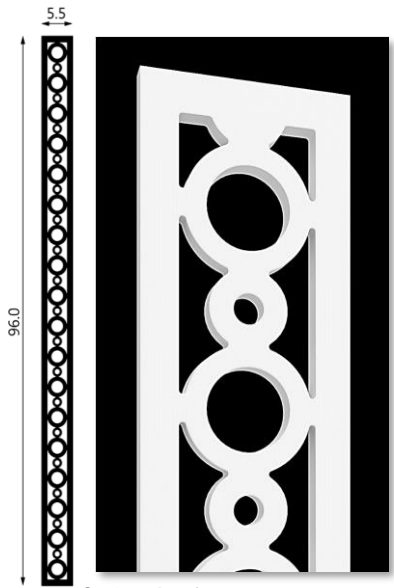
SKU: FP743



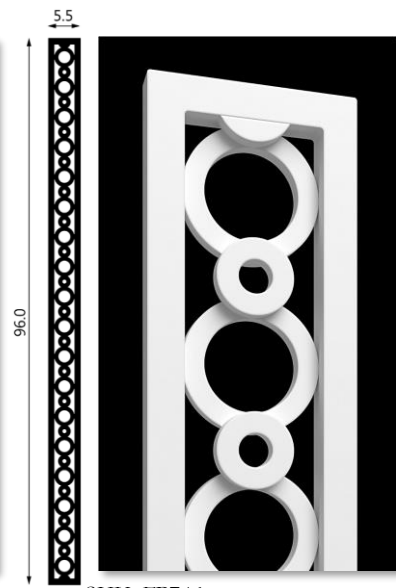
SKU: FP744



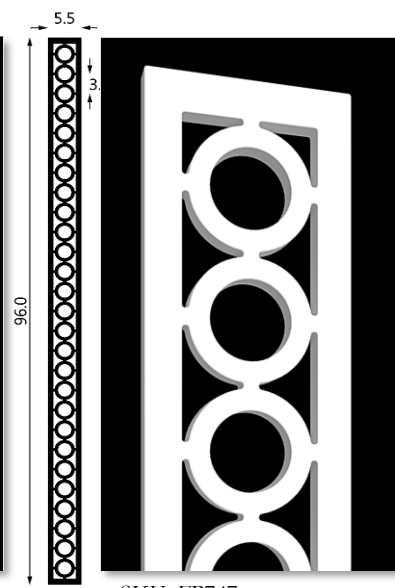
SKU: FP918



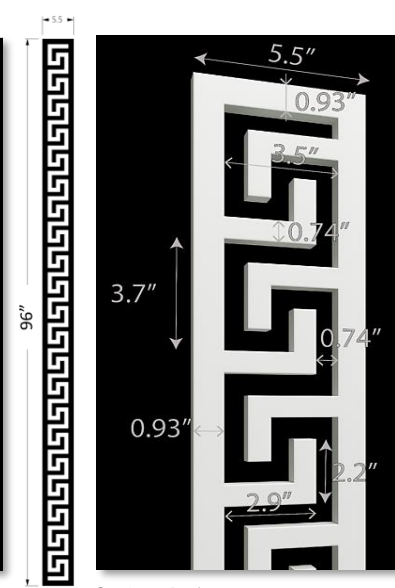
SKU: FP745



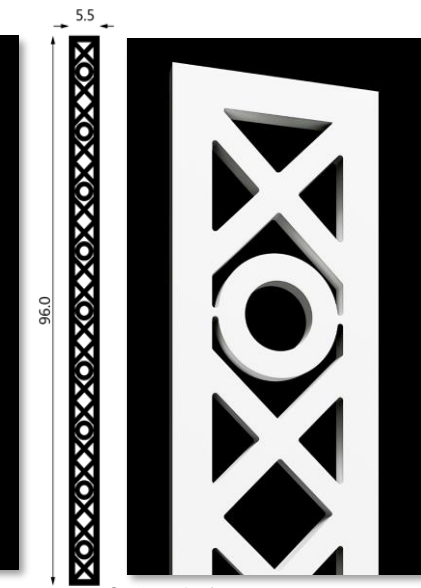
SKU: FP746



SKU: FP747



SKU: FP750



SKU: FP756

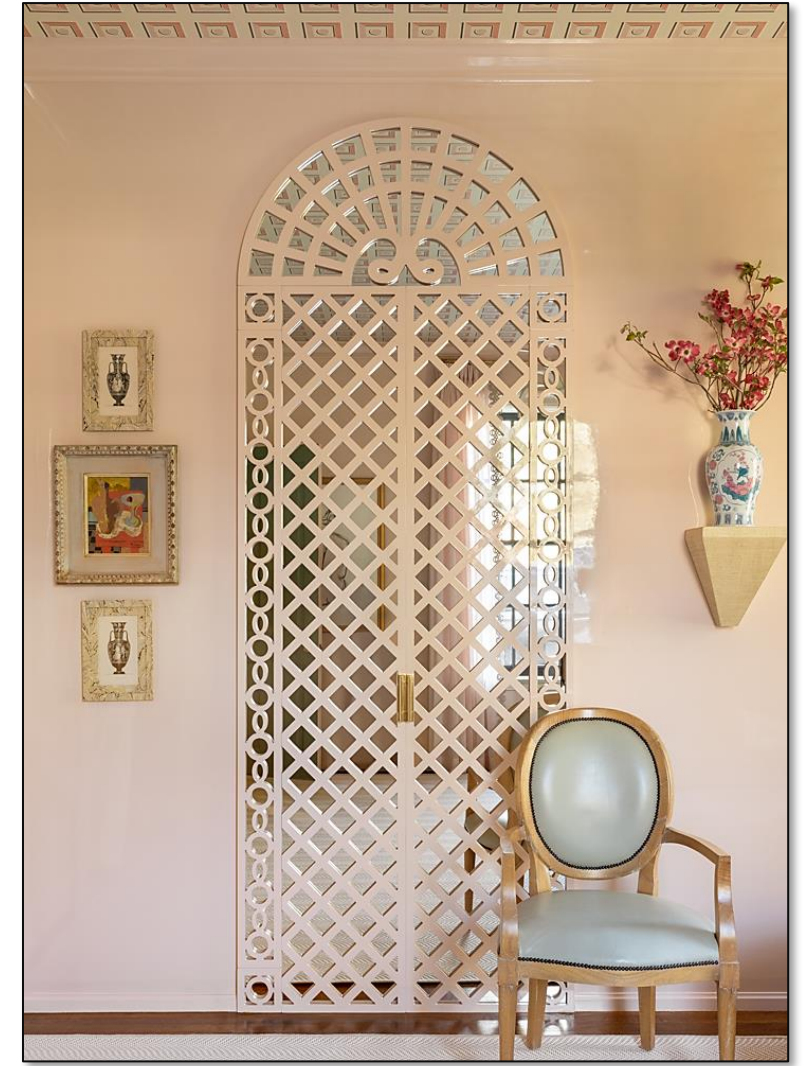
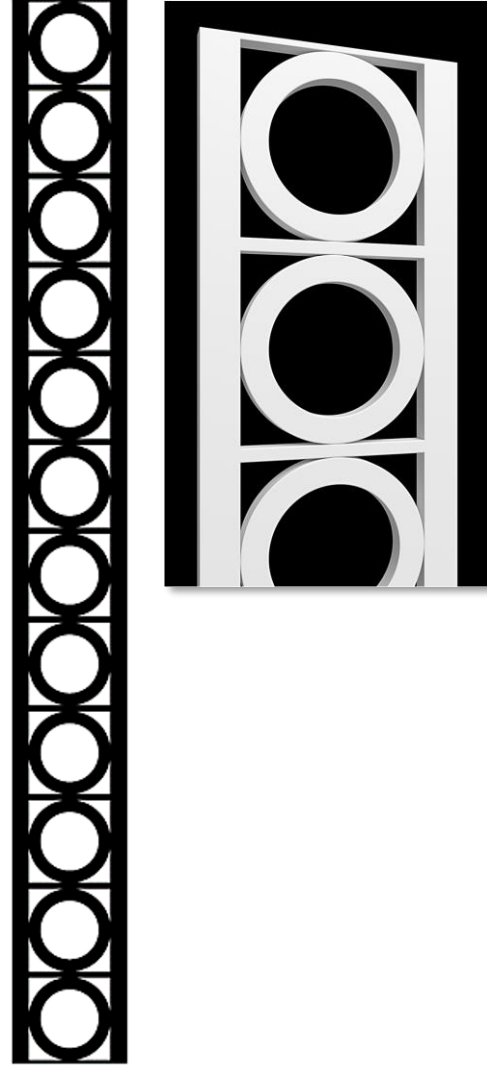
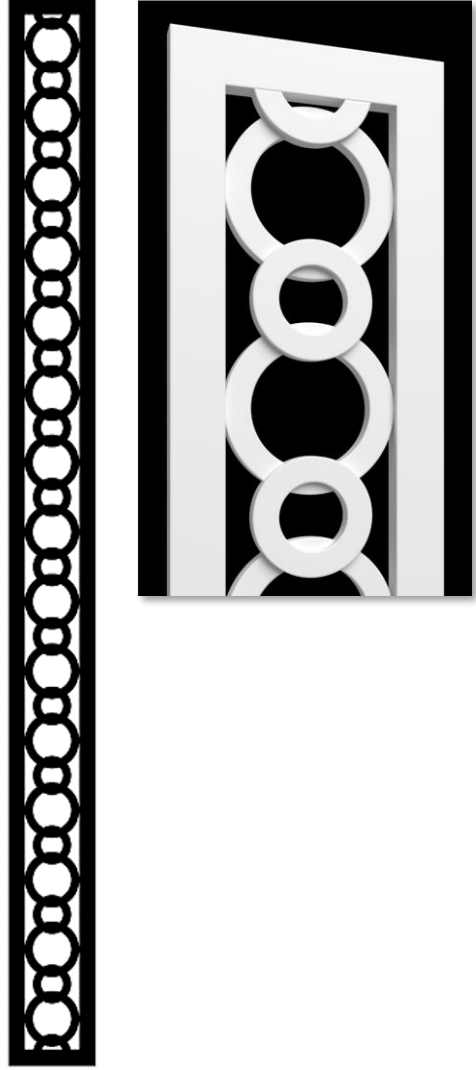
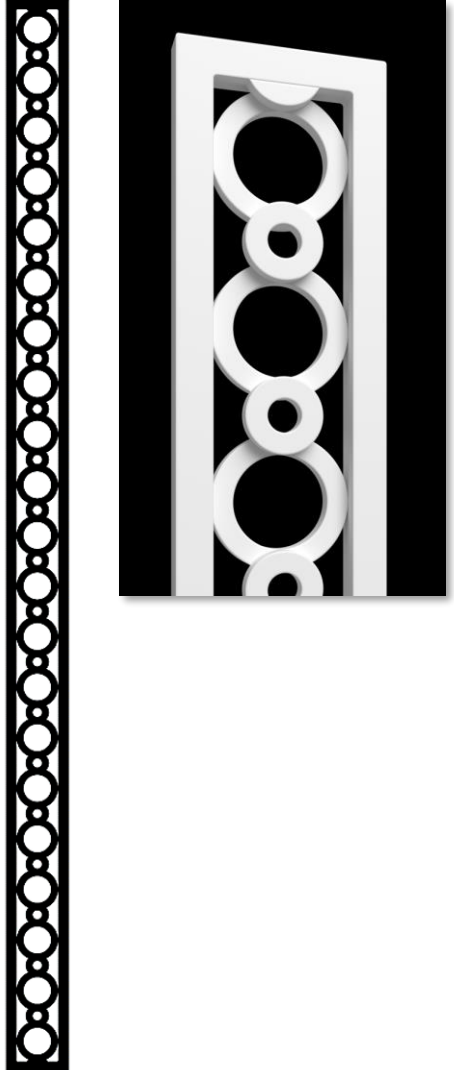


SKU: FP748 / FP750

5.5

8.0

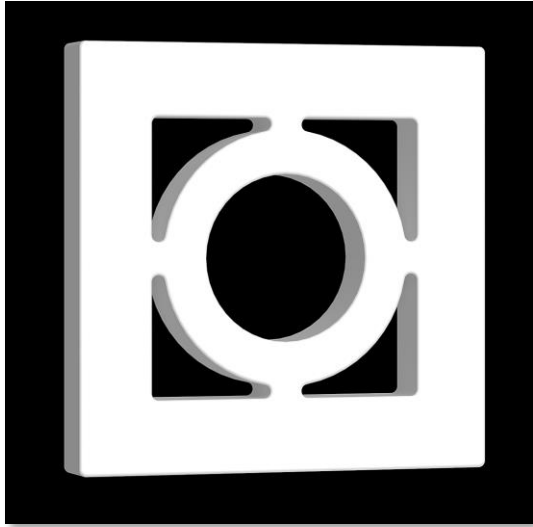
9.8



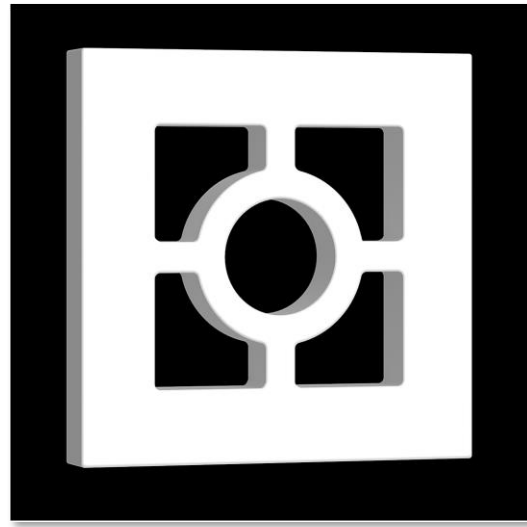
SKU: FP925  
(HAND ASSEMBLED BY INSTALLER)

SKU: FP785  
(HAND ASSEMBLED BY INSTALLER)

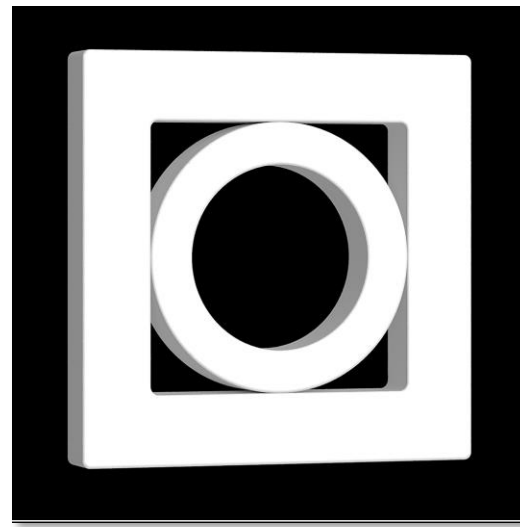
SKU: FP923  
(HAND ASSEMBLED BY INSTALLER)



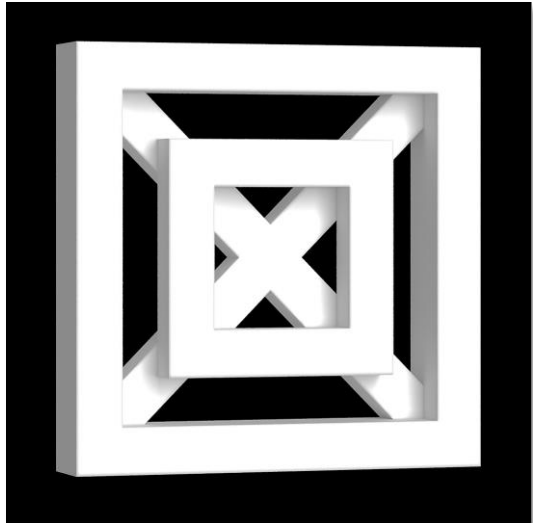
SKU: FP748



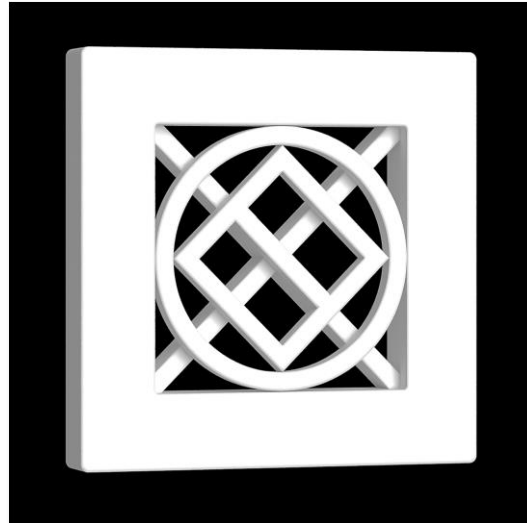
SKU: FP758



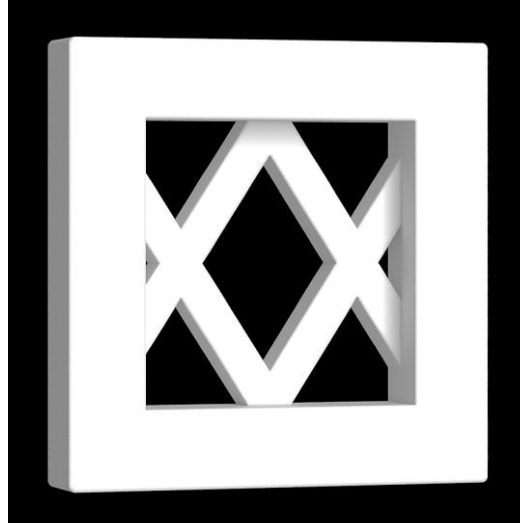
SKU: FP917 (HAND ASSEMBLED BY INSTALLER)



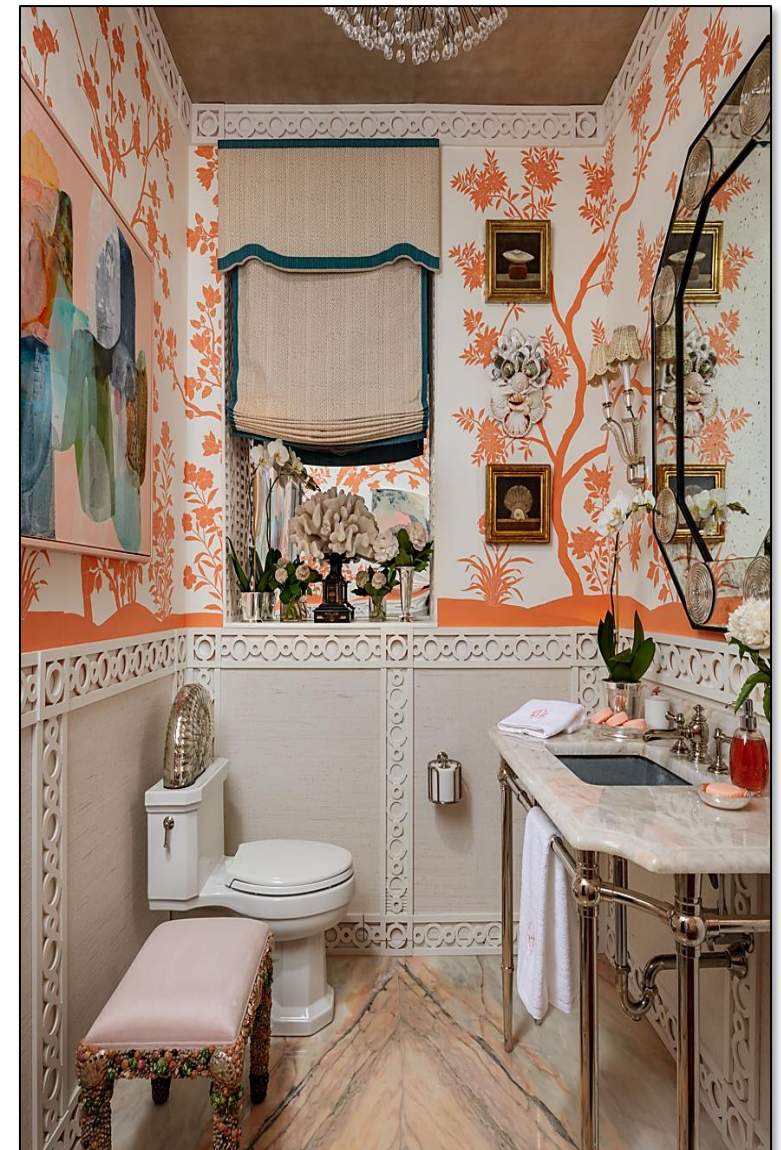
SKU: FP920



SKU: FP928

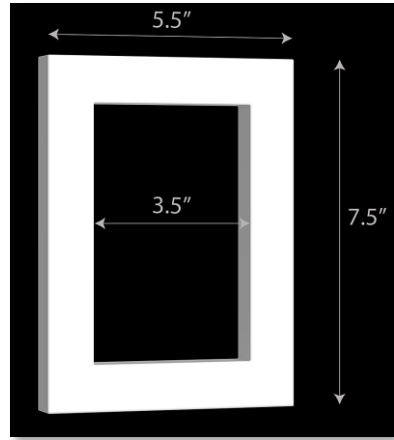


SKU: FP919



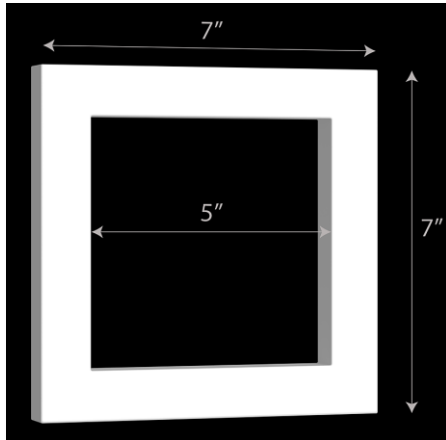
SKU: FP745/FP748

SINGLE SWITCH



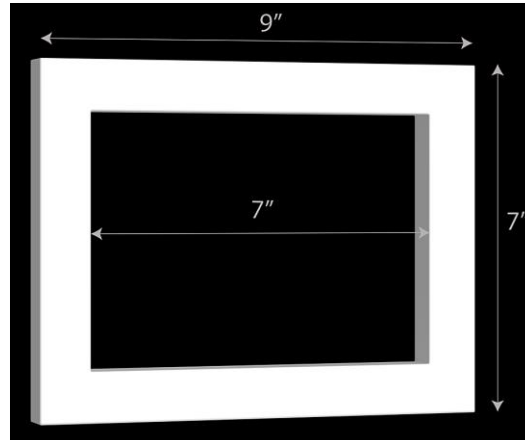
SKU: FP795

DOUBLE SWITCH



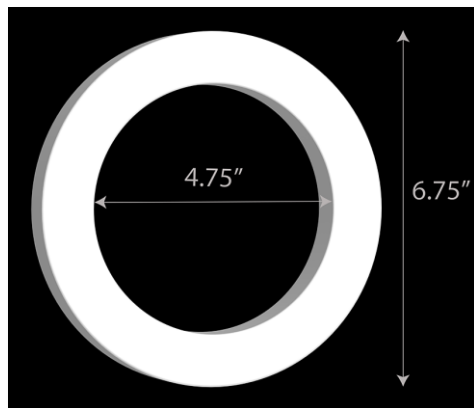
SKU: FP796

TRIPLE SWITCH



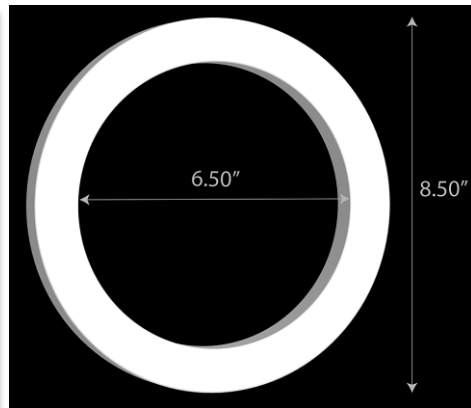
SKU: FP797

ROUND PLATE 6-3/4"



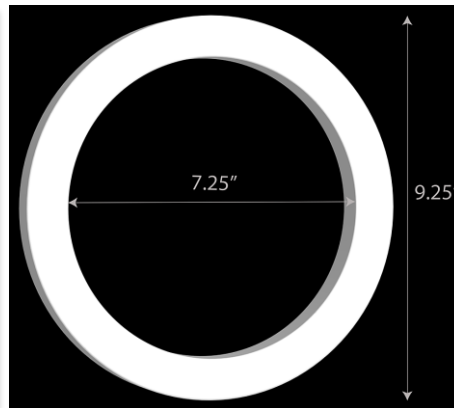
SKU: FP798

ROUND PLATE 8-1/2"



SKU: FP799

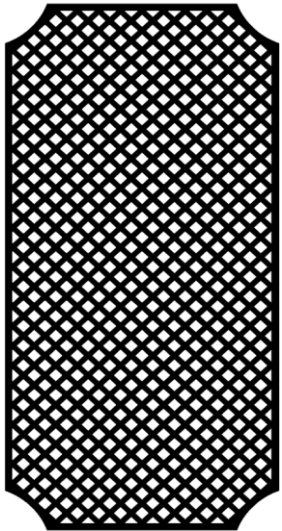
ROUND PLATE 9-1/4"



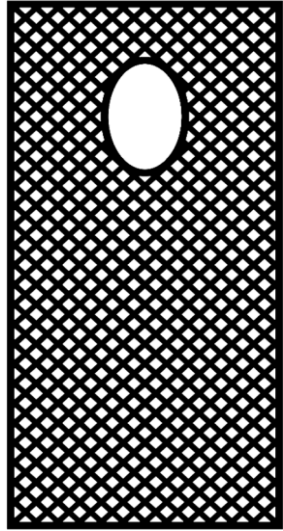
SKU: FP800



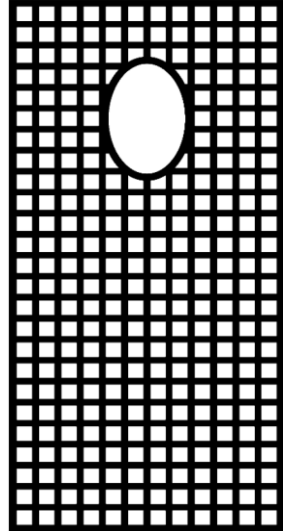
SKU: FP701 / FP753 / FP747 / FP773



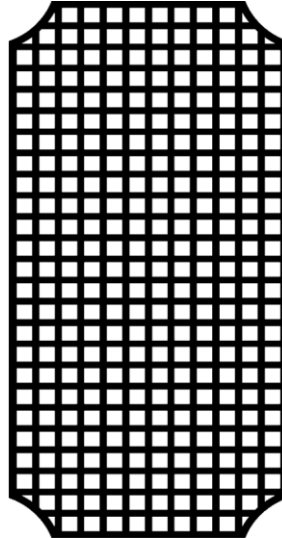
SKU: FP702-300



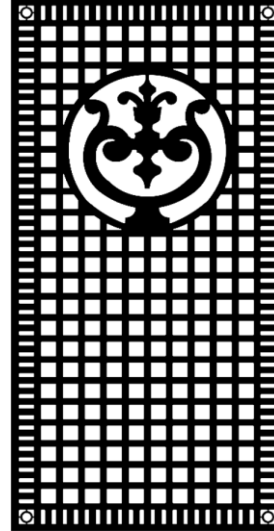
SKU: FP710-310



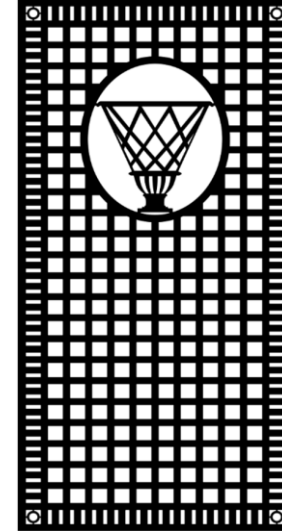
SKU: FP711-320



SKU: FP703-330



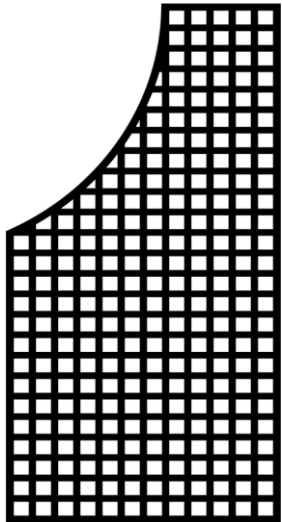
SKU: FP715-340



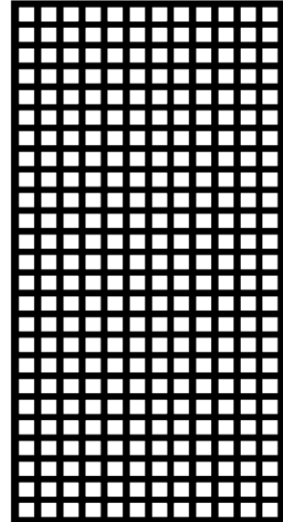
SKU: FP716-350



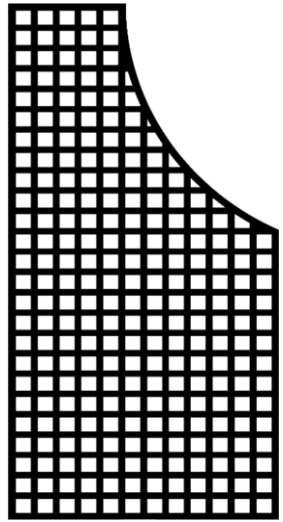
SKU: FP765



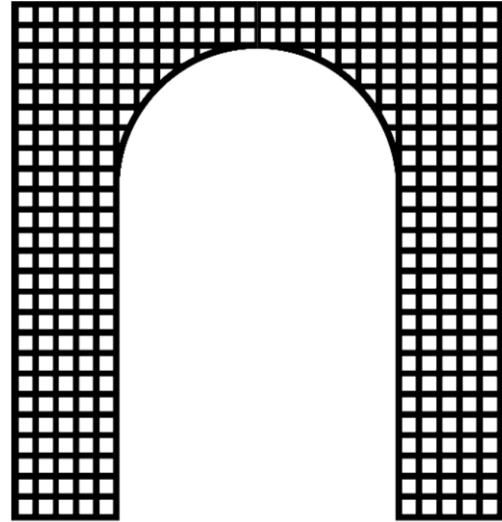
SKU: FP717-360



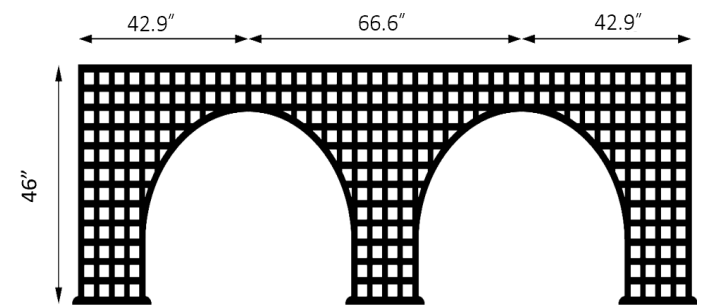
SKU: FP701-370



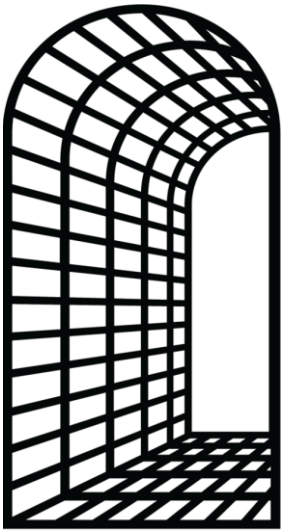
SKU: FP719-380



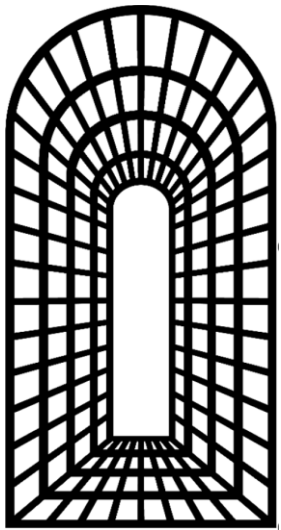
SKU: FP726-390



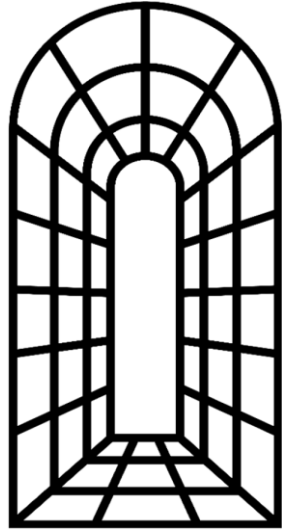
SKU: FP727-40



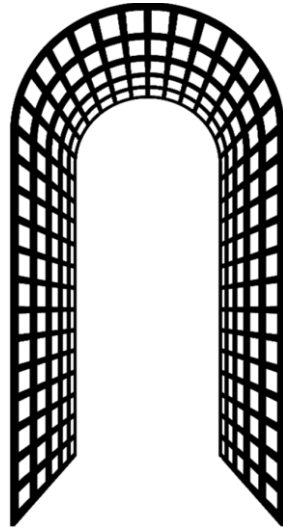
SKU: FP720-41



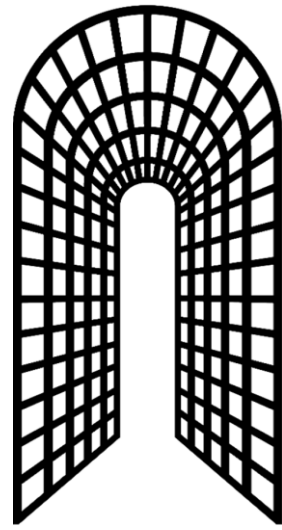
SKU: FP721-42



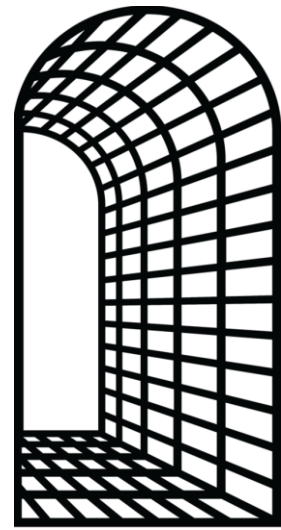
SKU: FP722-43



SKU: FP723-44



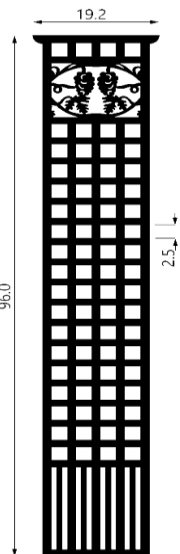
SKU: FP724-45



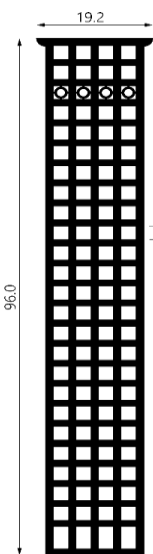
SKU: FP725-46



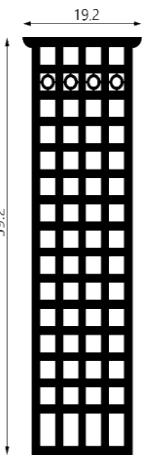
FP713; FP766; FP741; FP767



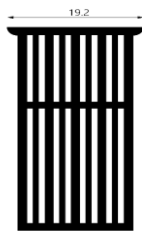
SKU: FP729-47



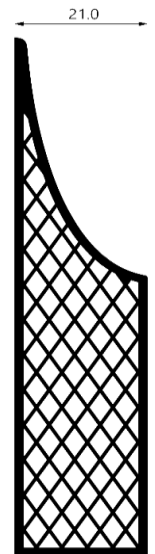
SKU: FP730-48



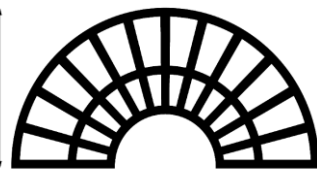
SKU: FP731-49



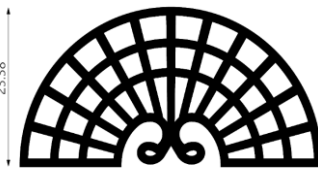
SKU: FP732-50



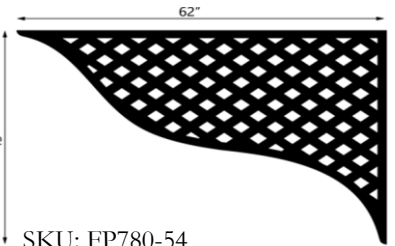
SKU: FP781-51



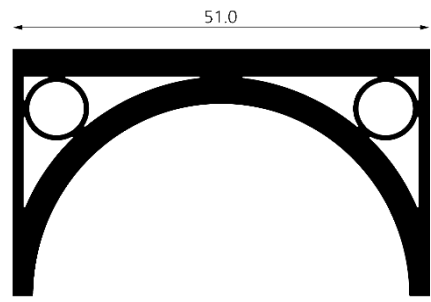
SKU: FP733-52



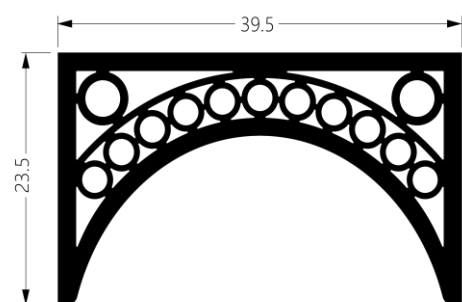
SKU: FP734-53



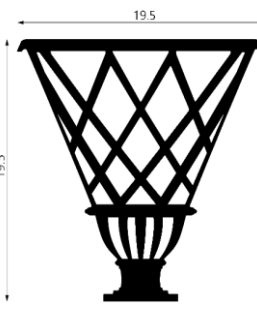
SKU: FP780-54



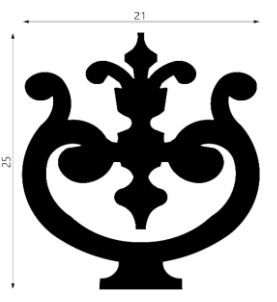
SKU: FP712-55



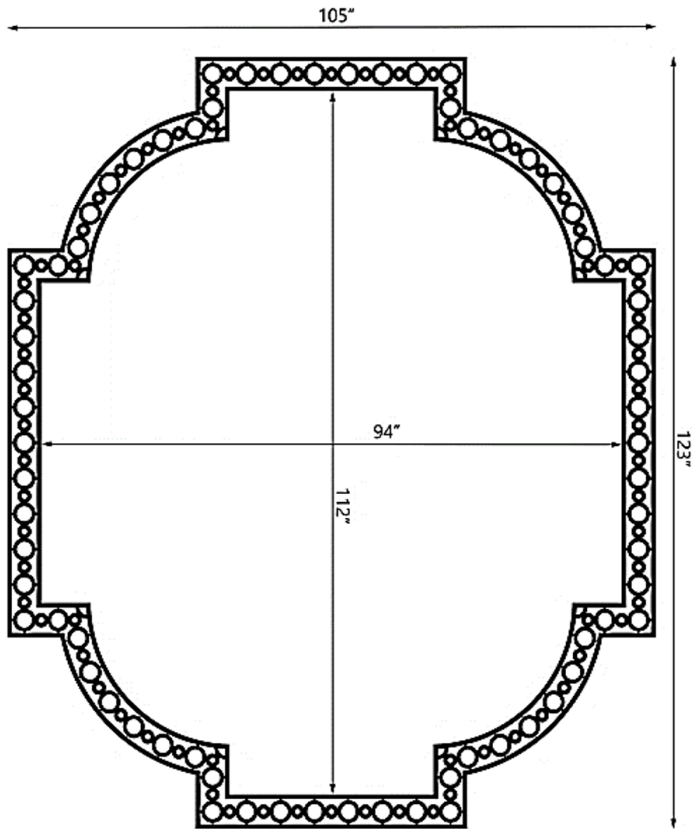
SKU: FP713-56



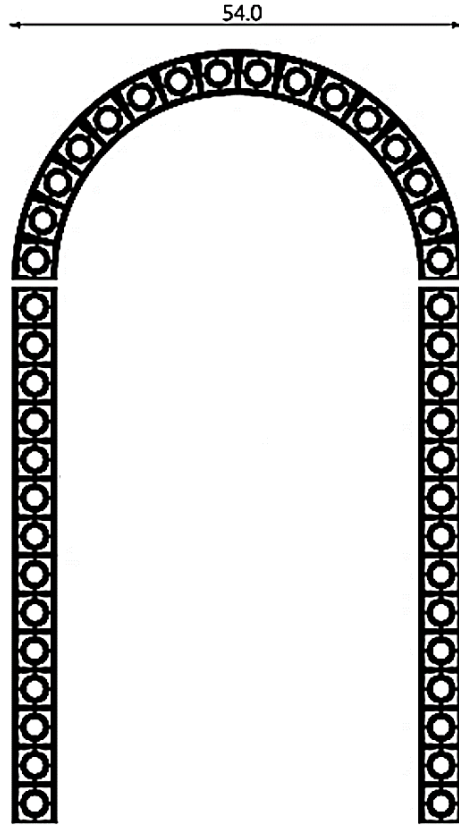
SKU: FP736-57



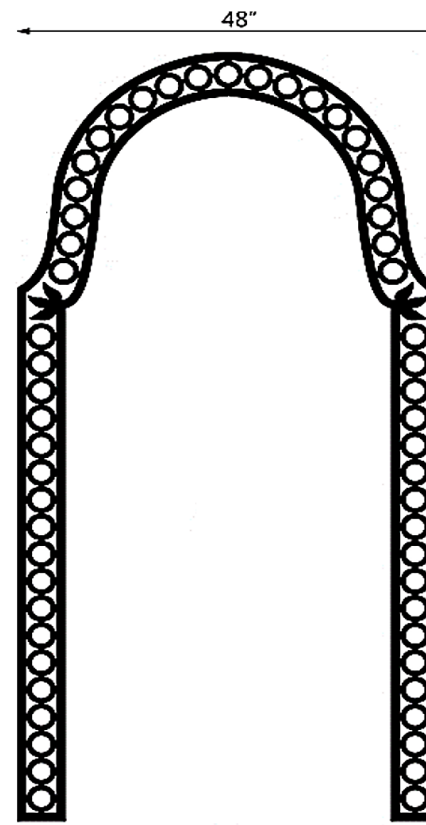
SKU: FP737-58



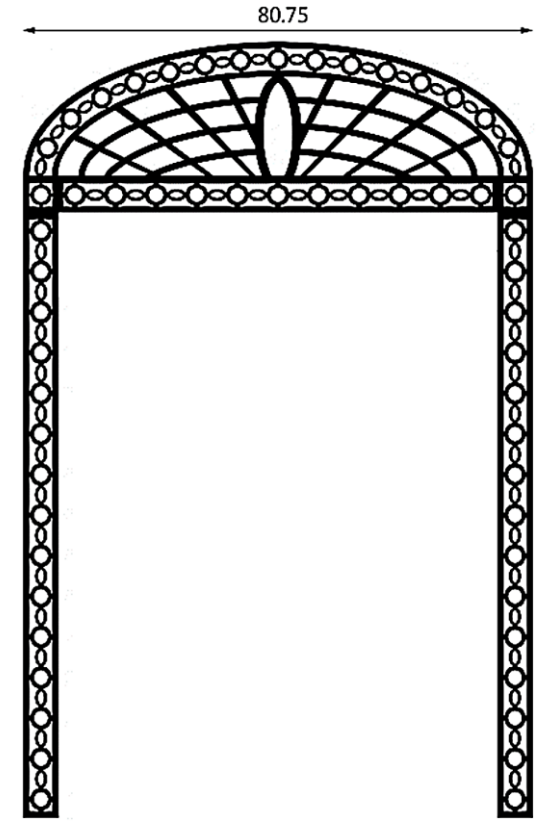
SKU: Custom Based on FP745



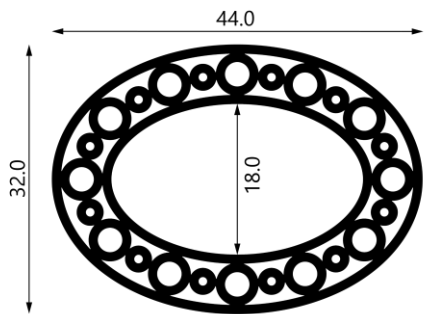
SKU: Custom Based on FP741



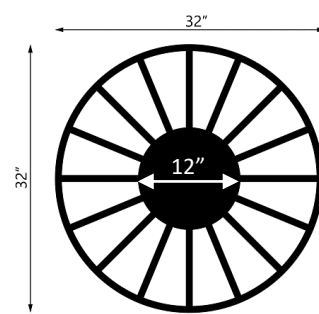
SKU: Custom Based on FP747



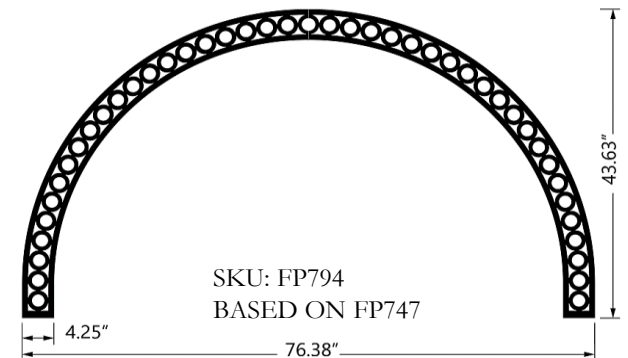
SKU: Custom Based on FP743



FP791-61

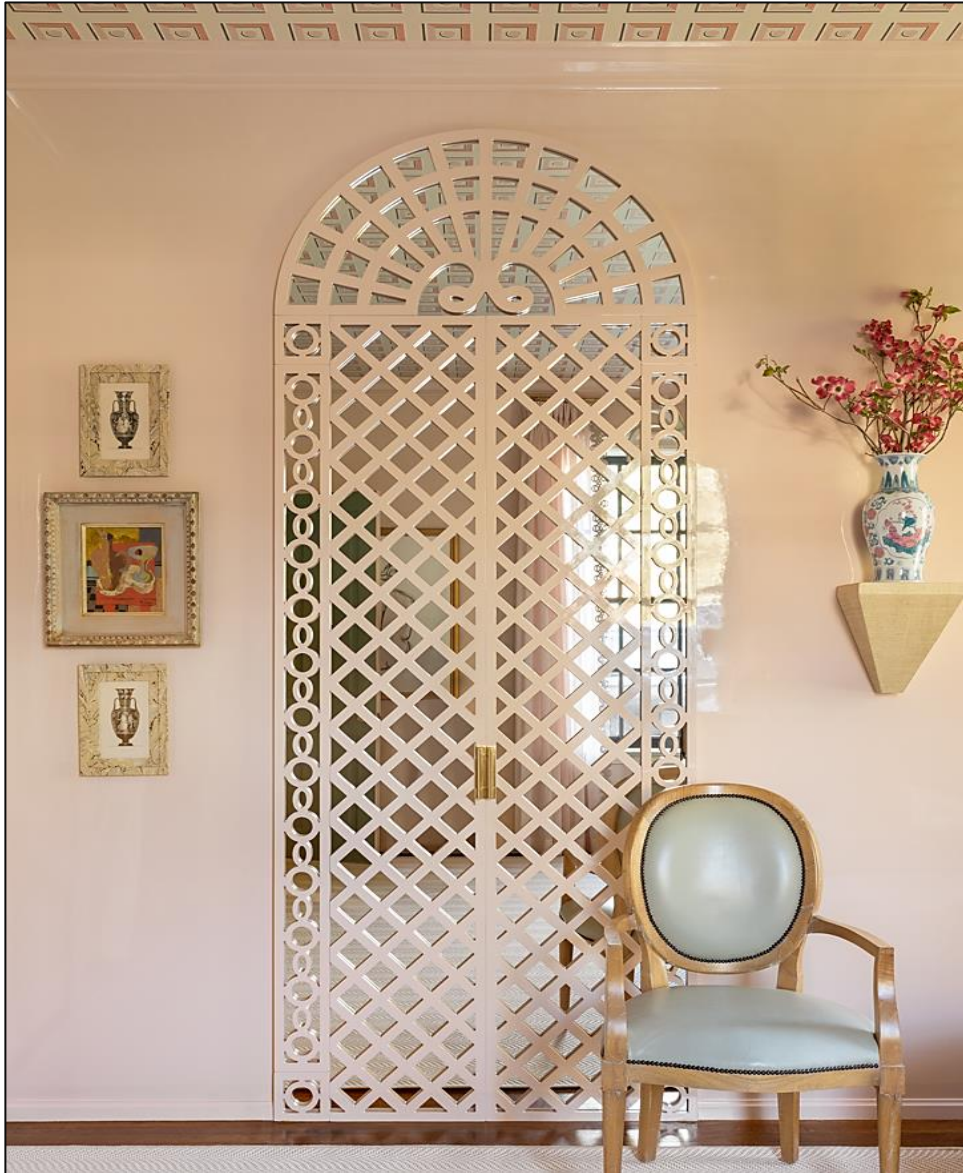


FP792-62



SKU: FP794  
BASED ON FP747





SKU: FP734/FP743/FP748/FP755



FP746

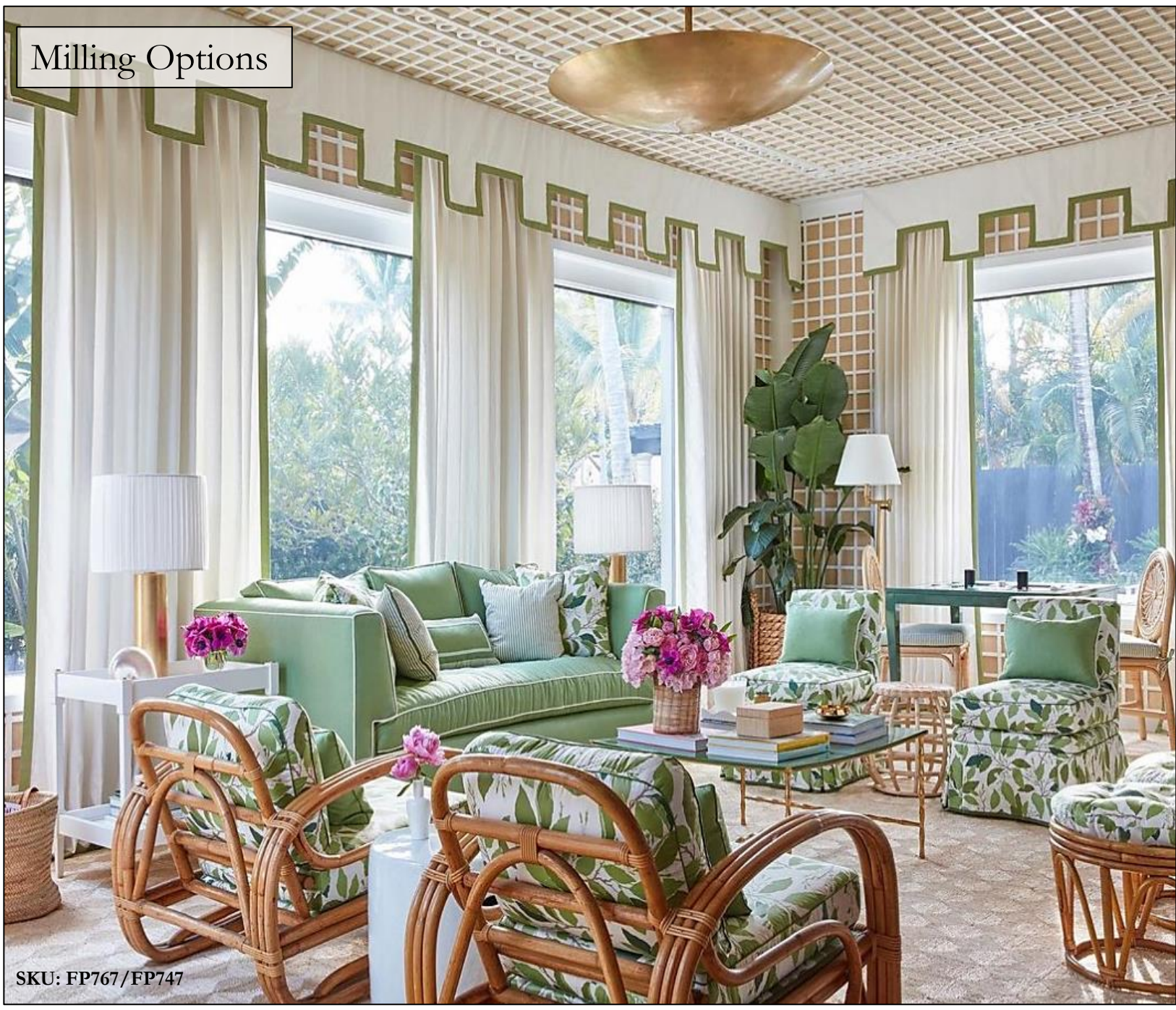


SKU: FP765; FP745; FP791



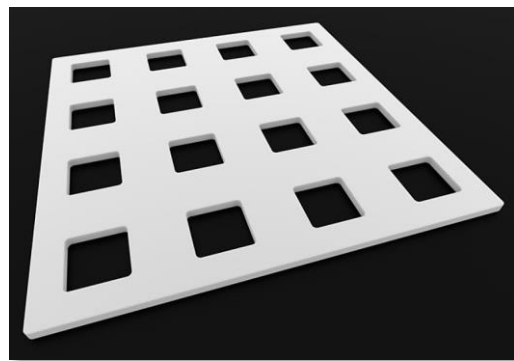
FP765 / FP760

# Milling Options

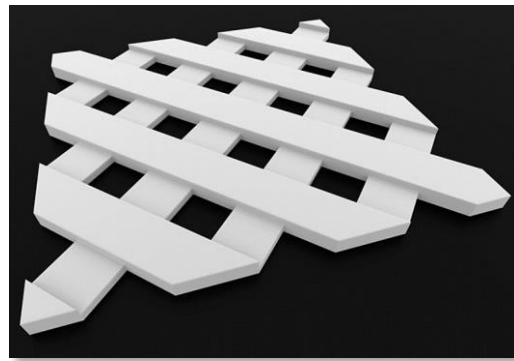


SKU: FP767/FP747

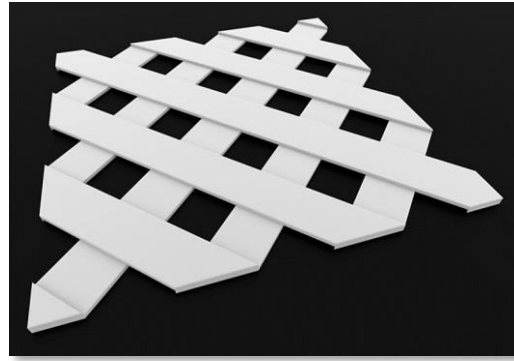
We offer three milling options of which are customizable in hole size, slat width and pattern orientation.



Type: **Bore**  
Min. Thickness: 1/4"  
Max. Panel Size 96"X48"



Type: **Single Mill**  
Min. Thickness: 1/2"  
Max. Panel Size: 96"X48"



Type: **Double Mill**  
Min. Thickness: 1/2"  
Max. Panel Size 96"X48"



SKU: FP766

### Installation

- Install using conventional woodworking techniques.
- Specialty adhesives may be required. Always test prior to installation.
- Carbide tipped blades are recommended.
- Glue all joints to prevent separation.

### Storage and Handling

- Store items on a flat surface and away from heat above 130 degrees.
- Keep product free of dirt and debris. Use warm water with detergent to clean.

### Additional

- LUSSOCOR™ material must be painted.
- PVC available in white material.
- Available material thicknesses: 1/4", 1/2", 3/4", 1", 1.5" and 2"
- Standard dimensions subject to change without notice.
- Allow 2-4 weeks to fulfill your order from design approval.
- 20% restock fee on approved returns. Custom projects are not returnable.
- Pricing is USD and does not include packaging, shipping and applicable taxes.
- Terms and Conditions found on website.
- Installation and Finishing documentation found on website.

### Warranty

#### 3 YEAR LIMITED WARRANTY

Fuller Architectural Panels (hereinafter "Manufacturer") warrants that all products will not rot, split or suffer structural damage from termite or fungal decay for a period of three (3) years from Fuller Architectural Panels. \*Purchaser's sole remedy for any claim whatsoever, whether in contract, warranty, tort, or strict liability, arising out of the use, storage or possession of Fuller Architectural Panels, including without limitation any claim that Fuller Architectural Panels fail to perform as warranted, shall be replaced with Fuller Architectural Panels. To obtain replacement, the original owner must submit this warranty certificate, with the original purchase invoice indicating the date of purchase, picture of the defective product and detailed description to Fuller Architectural Panels, 2009 Fairview Road #6731 Raleigh, North Carolina 27628.

MANUFACTURER'S LIABILITY UNDER WARRANTY IS LIMITED SOLELY TO REPLACEMENT OF DEFECTIVE PRODUCT. THIS WARRANTY SHALL NOT APPLY TO PRODUCT WHICH HAS NOT BEEN INSTALLED IN ACCORDANCE WITH INSTALLATION GUIDELINES SPECIFIED IN THE MANUFACTURER'S "INSTALLATION INSTRUCTIONS", OR TO PRODUCT WHICH HAS BEEN USED, PLACED UNDER OR SUBJECT TO ABNORMAL USE CONDITIONS OR USED, MODIFIED OR OTHERWISE TREATED IN ANY MANNER OTHER THAN AS INTENDED BY MANUFACTURER. IN NO EVENT SHALL MANUFACTURER BE LIABLE FOR LABOR, EXEMPLARY OR CONSEQUENTIAL DAMAGES OF ANY KIND WHATSOEVER. PURCHASER IS SOLELY RESPONSIBLE FOR DETERMINING THE SUITABILITY OF USE OR APPLICATION OF ANY FULLER ARCHITECTURAL PRODUCT, OR WHETHER PRODUCT MEETS REQUIREMENTS OF APPLICABLE BUILDING CODES OR SAFETY CODES FOR SPECIFIC APPLICATIONS. No person or entity is Authorized by Manufacturer to make, and Manufacturer shall not be bound by any statement or representation of Fuller Architectural Panels products other than amended or altered except in a written instrument signed by Manufacturer and Purchaser.